



## Efficient Skin Cancer Detection Using an Optimized CNN Framework

*J. Vidhyajanani<sup>a\*</sup>, G. Kanimozhi<sup>b</sup>, R. Lavanya<sup>c</sup>, S. Kaviya<sup>d</sup>, B. Devika<sup>e</sup>, A. Keerthana<sup>f</sup>*

<sup>a</sup> Assistant Professor, Department of computer science and Engineering, Paavai college of Engineering, Namakkal

<sup>b, c, d, e, f</sup> Students, Department of CSE ( Artificial Intelligence and Machine Learning), Paavai college of engineering, Namakkal

### ABSTRACT :

One of the most common illnesses on the planet is cancer. Cancer comes in many forms and affects different areas of the human body. Cancer kills nearly 5 million people each year, with skin cancer accounting for a significant proportion. The aberrant cell proliferation of the human body produced by the steady progression of physical, chemical, or biological carcinogens is known as skin cancer. Skin cancer is defined as aberrant skin cell proliferation that leads in neoplastic skin cell growth. There are four main types of skin cancer: actinic keratosis, basal cell carcinoma, squamous cell carcinoma, and melanoma. The mortality rate from melanoma skin cancer is significantly higher than that from non-melanoma skin cancer. There has been a consistent increase in both the incidence of melanoma and the number of cases analysed of non-melanoma skin cancers. Thus, skin cancer detection in its early stages is crucial for improving life expectancies. The goal is to use various forms of image processing and image recognition technologies such as segmentation and convolutional neural networks to create highly accurate and optimized versions of classifiers for various forms of skin cancer the categorization of skin problems is another highlight of this study

**Keywords:** Skin Cancer, CNN, Mel, Histogram, Conv2D, MaxPool2D.

### 1. Introduction :

Skin cancers is an uncommon improvement of pores and skin cells and has been beneath a big take a look at for decades. It, for the maximum part, creates in regions which can be provided to the solar, but it is able to be in likewise form in locations that don't normally gets solar openness. Two major styles of Skin most cancers are Melanoma and Keratinocyte Carcinoma. We would be using Neural networks for the detection of such cells. Companies using convolutional neural networks have several layers of artificial neurons. Synthetic neurons are a severe mimicry of their natural counterparts; they are numerical capacity that can evaluate the relative importance of various data sets and provide an initiation rating. A visual inspection of a worrisome skin region is the first step in evaluating malignant lesions. The commonality of several lesion types necessitates accurate identification; also, diagnostic accuracy correlates. Without technology assistance, the dermatologist has a cure rate of 65-80% in melanoma diagnosis. Dermoscopy photographs, obtained with a specialised high-resolution magnifying lens, will be utilised to back up the visual evaluation if there is any doubt. During the recording, the lights are turned on. Skin reflexes are reduced by using controlled filters, which allows you to view a deeper layer of skin. Support can enhance the accuracy of skin lesion diagnosis by another 49% using this technology. An absolute melanoma detection is achieved by combining optic examination with dermoscopy pictures. Typically, the CNN's initial (or base) layer recognizes important characteristics including flat, vertical, and sloping edges. Extra complex highlights, such as corners and an aggregation of edges, are extracted in the second layer, whose output is then sorted as a contribution to the primary layer's result. More advanced layers of the convolutional neural network can recognize more complex scene features, such as objects, faces, and more. To pre-method the statistics and run our CNN version, we need a dataset. Skin cancer growth datasets ordinarily come in various formats and shapes including clinical pictures, henceforth, the information requires enormous endeavors for pre-processing before the auto-diagnostic assignment itself. The HARVARD HAM10000 data set was used for the analysis presented in this study. We will run our version in this and depict, with images, how pores and skin most cancers detection is executed the usage of photo processing. The consequences will inspire and encourage for destiny development and studies on line diagnosing of pores and skin most cancers in early stages. Skin diseases can range from benign conditions like acne or eczema to severe forms of cancer such as melanoma, basal cell carcinoma, and squamous cell carcinoma. Actinic keratoses (AK) and intraepithelial carcinoma (AKIEC) represent precancerous and early malignant growths, respectively, often arising from prolonged UV exposure. Basal cell carcinoma (BCC) is the most prevalent form of skin cancer, typically manifesting as pearly or waxy bumps, while melanoma (MEL) is an extremely aggressive malignancy arising from melanocytes, with potential for metastasis if not promptly treated. Benign keratosis-like lesions (BKL), dermatofibroma (DF), melanocytic nevi (NV), and vascular lesions present a spectrum of non-cancerous growths, each requiring careful assessment to rule out malignancy or address cosmetic concerns

The automatic skin disorders classification can help people in identifying skin disorders that occur and immediately consult with medical personnel to get appropriate medical treatment. Several related studies based on digital image processing for the detection and classification of skin cancers were developed as a tool for medical personnel to diagnose skin disorders more accurately with fast computing time. The previous research was developed using an edge detection method with K-NN and C-NN algorithms provide an accuracy of 75% and 75.6% respectively to classify skin disorders that potentially benign cancer and skin disorders that have the potential to be malignant cancer by using the International Skin Imaging dataset Collaboration

(ISIC). In research, using the ISIC dataset for the conditions of skin cancer and skin benign tumors, an automatic skin disease classification system was developed based on deep learning with PNASNet-5-Large architecture which gives the best performance accuracy of 76%. Furthermore, other studies using CNN for the detection of skin diseases provide performance accuracy of 80.52%, 86.21%, 87.25% respectively. To increase the amount of data and to improve the performance of the skin cancer detection system, the ISIC data augmentation process was performed. The best accuracy was obtained by 95.91% using Alexnet. In the study, the CNN method with random regulators gave performance accuracy of 97.49% to distinguish some lesions of skin disorders such as nevus lesions, carcinomas, and melanomas. In this study, augmentation data from the ISIC dataset will be used to recognize the condition of skin cancer lesions or benign tumor lesions that look similar to cancer. The proposed method in this study uses CNN with various optimizer methods such as SGD, RMSprop, Adam, and Nadam optimizer to find out which optimizer provides the best performance.

Unlike in ML algorithms, large sets of raw data are used as inputs, and end-to-end training and automatic feature learning are the main advantages of deep learning algorithms<sup>9</sup>. In fact, the CNN technique has extensive applications in disease diagnosis. The performance of CNNs in a variety of cancer detection and classification tasks, such as breast cancer, prostate cancer, liver lesions, and lung cancer, is particularly encouraging. According to Sudharshan et al., employing CNN models enhances the performance of diagnostic systems. The general CNN framework consists of layers for feature extraction, feature mapping, and subsampling. However, feature extraction and mapping play a significant role in the outcome of the network. Taking this into account, the performance of some algorithms is influenced by the number of features, and rabbits in turn require feature reduction. The benefits of feature reduction include data storage space reduction, computation time reduction, removing noisy data, and improving the classification process. Many techniques, including filtering, wrapping, and embedding, have been proposed for feature reduction. The heuristic search algorithm is a wrapper technique. Metaheuristic methods, or stochastic methods, are adopted for tackling various problems as solvers when optimization is needed. These methods do not rely on the mathematical characteristics of the object. Swarm intelligence-based stochastic approaches are the most widely used. The primary evolutionary origins of swarm-based approaches are drawn from animal foraging, hunting, and survival of the fittest. Recent examples of well-known methods include the Harris hawk optimizer (HHO), the whale optimization algorithm (WOA), ant colony optimization (ACO), fruit fly optimization (FFO), and the grey wolf optimizer (GWO).

---

## 2. Literature Review :

Adaptive main curvature was used to detect and remove hair from images, colour normalisation was used to segment skin lesions, and the ABCD rule was used to extract characteristics for melanoma diagnosis. When it comes to recognizing hairs, the adaptive main curvature comes in help. To diagnose low-intensity skin lesions and lessen the effects of shadow and shade, colour normalisation is highly helpful. Melanoma is diagnosed by analysing the TDS score using the ABCD criteria. Each task, including hair detection, segmentation of skin lesions, and melanoma identification, as well as the overall recommended technique, is quite accurate and works well. The suggested approach has a flaw in that it was only tested on one individual, and the width of skin lesions is difficult to see throughout the shot. As a result, the information must be mined for the diameter of the skin lesions.

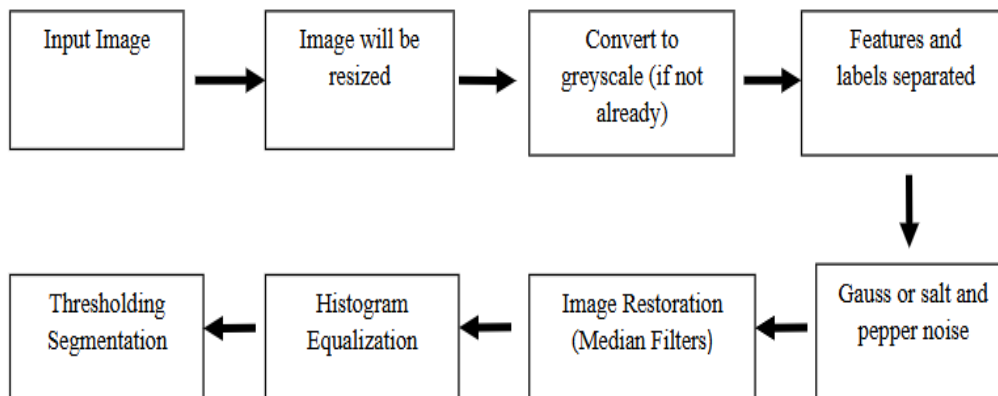
In this study, researchers R. S. Sanketh, M. Madhu Bala, P. V. Narendra Reddy, and G. V. S. Phani Kumar (2020) created a method for detecting cancer more quickly and accurately. A method for identifying and differentiating cancer. We were able to diagnose malignant and benign skin cancer with 91 percent accuracy using ISIC data. A specialist with years of expertise is a more realistic model. Fewer epochs are employed due to a shortage of hardware resources. Increase the number of epochs utilized to enhance efficiency. The total number of epochs and transitions that have occurred. Future work could involve integrating this approach with web-based or mobile paradigms. Without needing to go to the hospital, an application may be evaluated remotely. D. C. Malo, M. M. Rahman, J. Mahbub and M. M. Khan (2022) The purpose of this research was to examine how well sophisticated convolutional neural architectures can distinguish between benign and malignant skin cancers. To assist specialists, these styles may be effortlessly integrated in dermoscopy frameworks or even on cellphones. To inspire change, extra various datasets (different categories, different ages) with numerous additional dermoscopy photographs and altered 6 checks according to lesson are required. It could be good to use the information of each image to increase the model's accuracy. 5636 is the new structured check range. The lookupset's accuracy is 0.875757576118816. The findings show that in the binary class of star freckle versus skin cancer, a CNN constructed using the approach presented in would not perform worse. S. Pande et al (2018) analysed and evaluated CNN's most recent iteration, known as the capsule network, which is used for many different jobs. Titus Josef Brinker (2018) using CNN which is already trained using some large dataset in which optimizes the performance of the neural network by tuning and optimizing the parameters and hyper parameters. This approach of optimization of a currently employed CNN is one of the most accurate and powerful system on the market. The downside in this case remains the lack of memory. In the future, we will be able to work in a hybrid network that includes CNN and LSTM performance, achieving skin cancer detection model accuracy as close as possible to a complete model. S. Pande et al (2022) presented a shape and texture-based approach using KNN for classification of general images. The IDM and shape features used here are helpful for effective classification of the images. Vedanti Chintawar and Jignyasa Sanghavi (2018) Bolster Support Vector Machine (SVM) calculation and GLCM system. The proposed technique successfully detects the Skin cancer from images but more precise outcomes are possible. Deep convolutional neural networks (CNNs) indicate potential. Capsule Network based technique for medicinal leaf retrieval was developed by S. Pande et al. (2021). Using images from several dermatological collections, A. Ech-Cherif, M. Misbhaudhin, and M. Ech-Cherif (2019) developed a deep neural network architecture that is both efficient and suitable for usage on mobile devices. The created model was evaluated with various learning rates and stack size to determine the near-optimal hyperparameters that could be used in the prototype application. The total accuracy is 91.33 percent with a stack size of 32. Using the CoreML framework, the model was then converted to an iOS mobile application.

---

## 3. Proposed methodology :

Fig 1) The primary emphasis of the skin cancer detection method is image enhancement and thresholding segmentation. While each of these approaches has its benefits, the accuracy of the final product is much improved when pre-and post-processing techniques are utilised in tandem with the basic

algorithms. Data Pre-processing-1) Each individual image is resized. 2) Image will be converted into grayscale. 3) The features and labels are then separated into 2 different lists. Image Processing -1) Add gauss or salt-and-pepper noise based on the parameters passed.



**Fig 1: proposed Methodology**

Image Restoration-1) Median filters might work the best from the three provided noises. 2) Median filters are a type of non-linear digital filter that is often used to reduce noise in images and signals. Image enhancement-1) To improve contrast, histogram equalization is performed to modify picture intensities. 2) An image may be represented by the function  $f$  as a  $m_r * m_c$  matrix of integer pixel intensities in the range 0 to  $L-1$ , where  $L$  is the maximum number of intensities that can be utilised in the image (which is 256). Image Segmentation-1) Thresholding segmentation will be used. 2) The dataset contains images having distinct tumor regions and background skin. Convolutional Neural Networks (CNN) are a more advanced kind of neural network. With its use of normalisation, backpropagation, and gradient descent, CNN is a mathematical mastery technique worth studying. A convolutional layer, a pooling layer, and a fully connected layer make up a convolutional neural network (CNN). Because of their great overall performance, synthetic neural networks are recognized as appropriate responses to a variety of tough issues in photo processing and system vision. Gradient descent was used to minimize the error between the executed reaction from the community and the intended value in multilayer perceptron designs and other equivalent networks, which is a shortcoming of these networks. However, when gradient descent is utilized, the outcome is typically confined within the local minimum, resulting in a poor-quality international solution. When it comes to handling difficult circumstances, CNN has the power to be exceedingly green. • CNN Layers 1) (Fig 2) Input Layer: As large images will require exponentially huge computation power in order to train. Therefore, we will resize the image to a 28x28x3 image. 2) The dropout layer ignores (randomly) a set of neurons. This is usually used to prevent the mesh from becoming too large. 3) The high-density layer is the conventional fully linked layer in a neural network. A dense layer fully connects the neurons in the neural network. 4) The flatten function takes a pooled feature map and converts it into a single column that can be sent to a fully linked layer. When you have a multidimensional output and want to make it linear so you can feed it onto a Dense layer, you utilize Flatten layers. 5) When training a deep neural network, the inputs to each layer are normalised on a mini-batch basis using a technique called batch normalisation. This helps to stabilize the learning process and drastically reduces the number of epochs of training needed to construct deep networks. 6) Conv2D class. 2D convolution layer-A tensor of outputs is produced by the 2D convolution layer by convolving a convolution kernel created by this layer with the input of the layer. When utilise bias is set to True, a bias vector is created and attached to the outputs. Finally, if activation is not None, it will be applied to the outputs too though. When utilising this layer as the first in a model, provide the input shape (tuple of integers, excluding the sample axis) using the keyword parameter, for instance, input shape=(128, 128, 3) for 128x128 RGB images in data format="channels last"

### 3.1 Adam Optimizer

Adaptive moment estimation is a method used in gradient descent optimization. When dealing with huge problems involving a significant number of data or parameters, this strategy is particularly effective. It is efficient and consumes little memory. It's a mix of the steepest descent method, the momentum algorithm, and the RMS algorithm, on the surface. The Adam Optimizer works in a similar way to a standard gradient descent algorithm. The distinction between Adam optimizer and gradient descent is that the learning rate in Adam optimizer is higher at first, but it drops as the number of completed epochs grows

## 4. Performance Evaluation :

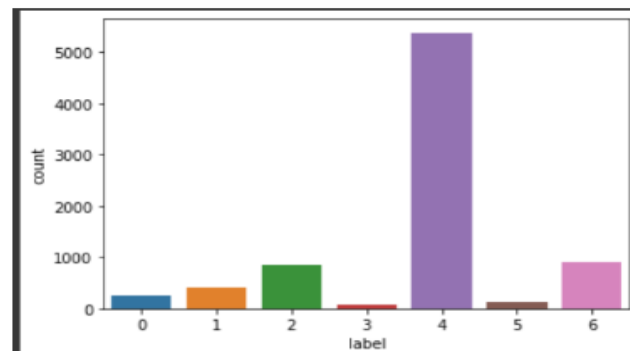
After making a reasonable front end and back end and considering the exactness of above 90 %, the result got has demonstrated to be correct and can be relied upon. We have 7 classes of skin malignant growths thus far; the model has been performing especially well. Upon additional testing with various pictures, the precision ended up being something similar and the model gave right result. The CNN layers utilized alongside sweeping data-set isolated into both, preparing and testing, can be credited for acquiring this high exactness. Besides the fact that the site analyzes precisely, expansion of highlights,

for example, meaning of the sickness and how deadly it tends to be, gives an understanding to the clients that can help them towards the correct course to seeking the treatment they require. R. S. Sanketh, et.al [2], has mentioned their accuracy is 85% but, in this method, we achieved the accuracy of 95%.

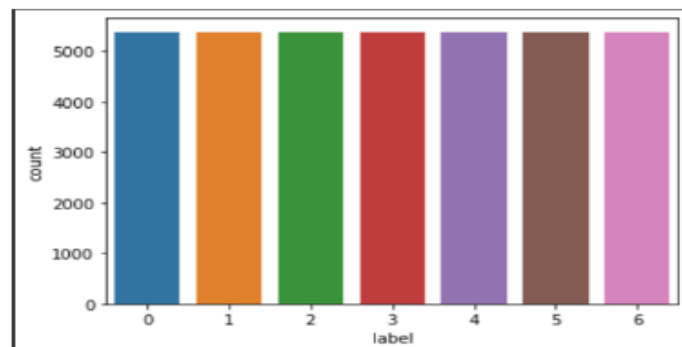


**Fig 2: Image uploading (Home page)**

We have created a web-based or mobile model. User can click a picture of his/her infected skin region and upload. Actinic keratoses and intraepithelial carcinoma, basal cell carcinoma, benign keratosis-like tumors, dermatofibroma, melanocytic nevi, pyogenic granulomas and haemorrhage, and melanoma are among diseases that may be recognized by this paradigm. After classifying the disease, the app can also show some information about the disease, and suggest the user to contact a dermatologist as soon as possible. To check whether the person has skin cancer and which type of skin cancer we will take an image as an input and run it on our website. After uploading the input image, we got the result the results in the below figure as Diagnosed with melanoma.



**Fig 3: Before Oversampling**



**Fig 4: After Oversampling**

Initially, we discovered that the validation accuracy was too low after training our model (mid 50s). We then tried increasing the learning rate to see if it would help, but no luck. Then we came to know that the frequency of the classes was imbalanced (class melanocytic nevi had a far greater frequency than others). To correct this, we used RandomOverSampler to equalize the frequency of the classes. The frequency of the classes before and after random over sampling is depicted in the graphs above

#### 4. Conclusion :

The paper's major objective was to create a highly accurate model that could detect different forms of skin cancer. We have created a superior skin cancer detection model using CNN along with a website. We could conclude that depending upon the training/validation, split and the accuracy of the paper was above the 95% mark. For future work, we can incorporate several image processing models which will enhance the image quality and give even higher accuracies. Also, we can add more functionalities to the website to make it more user friendly such as giving the doctors contact details, name of the closest hospital etc. Not only this, we can expand our reach to different types of cancer and provide a common framework for all cancer diagnosed patients and help them overcome this lethal disease. However, despite all this, it is advised to get the doctors expert opinion irrespective of the model's diagnosis.

#### REFERENCES :

- [1]Thanh DNH, Prasath VBS, Hieu LM, Hien NN. Melanoma Skin Cancer Detection Method Based on Adaptive Principal Curvature, Colour Normalisation and Feature Extraction with the ABCD Rule. *J Digit Imaging*. 2020 Jun;33(3):574-585. doi: 10.1007/s10278-019-00316-x. PMID: 31848895; PMCID: PMC7256173.
- [2]R. S. Sanketh, M. Madhu Bala, P. V. Narendra Reddy and G. V. S. PhaniKumar, "Melanoma Disease Detection Using Convolutional Neural Networks," 2020 4th International Conference on Intelligent Computing and Control Systems (ICICCS), 2020, pp. 1031-1037, doi:10.1109/ICICCS48265.2020.9121075.
- [3]D. C. Malo, M. M. Rahman, J. Mahbub and M. M. Khan, "Skin Cancer Detection using Convolutional Neural Network," 2022 IEEE 12th Annual Computing and Communication Workshop and Conference (CCWC), 2022, pp. 0169-0176, doi:10.1109/CCWC54503.2022.9720751.
- [4]Brinker T, Hekler A, Utikal J, Grabe N, Schadendorf D, Klode J, Berking C, Steeb T, Enk A, von Kalle C Skin Cancer Classification Using Convolutional Neural Networks: Systematic Review *J Med Internet Res* 2018;20(10)11936, DOI: 10.2196/11936.
- [5]Bumrungkun, Prachya, Kosin Chamnongthai and Wisarn Patchoo. Detection skin cancer using SVM and snake model. *2018 International Workshop on Advanced Image Technology (IWAIT)* (2018): 1-4.
- [6]Chintawar, Vedanti Sanghavi, Jignyasa. (2018). A Review on Computer-Aided Melanoma Skin Cancer Detection using Image Processing. 10.13140/RG.2.2.35475.20000
- [7]Singhal, Ekta, Shamik Tiwari. "Skin Cancer Detection using Artificial Neural Network." *International Journal of Advanced Research in Computer Science [Online]*, 6.1 (2015): 149-157
- [8]R. R. Subramanian, D. Achuth, P. S. Kumar, K. Naveen kumar Reddy, S. Amara and A. S. Chowdary, "Skin cancer classification using Convolutional neural networks," 2021 11th International Conference on Cloud Computing, Data Science Engineering (Confluence), 2021, pp. 13-19, doi:10.1109/Confluence51648.2021.9377155.
- [9]M. Hossain, K. Sadik, M. M. Rahman, F. Ahmed, M. N. Hossain Bhuiyan and M. M. Khan, "Convolutional Neural Network Based Skin Cancer Detection (Malignant vs Benign)," 2021 IEEE 12th Annual Information Technology, Electronics and Mobile Communication Conference (IEMCON), 2021, pp. 0141-0147, doi: 10.1109/IEMCON53756.2021.9623192.
- [10]A. Ech-Cherif, M. Misbhauddin and M. Ech-Cherif, "Deep Neural Network Based Mobile Dermoscopy Application for Triaging Skin Cancer Detection," 2019 2nd International Conference on Computer Applications Information Security (ICCAIS), 2019, pp. 1-6, doi: 10.1109/CAIS.2019.8769517.
- [11]K. M. Hosny, M. A. Kassem and M. M. Foad, "Skin Cancer Classification using Deep Learning and International Journal of Intelligent Systems and Applications in Engineering IJISAE, 2024, 12(5s), 26–32|32 Transfer Learning," 2018 9th Cairo International Biomedical Engineering Conference (CIBEC), 2018, pp. 90-93, doi: 10.1109/CIBEC.2018.8641762.
- [12]Das, K.; Cockerell, C.J.; Patil, A.; Pietkiewicz, P.; Giulini, M.; Grabbe, S.; Goldust, M. Machine Learning and Its Application in Skin Cancer. *Int. J. Environ. Res. Public Health* 2021, 18, 13409
- [13]Mishra, S., Roy, N., Bapat, M., & Gudipalli, A. (2021). Performance evaluation of Brain Tumor Detection using watershed segmentation and Thresholding. *International Journal on Smart Sensing and Intelligent Systems*, 14(1), 1–12.
- [14]Pande S.D., Chetty M.S.R. (2021) Fast Medicinal Leaf Retrieval Using CapsNet. In: Bhattacharyya S., Nayak J., Prakash K.B., Naik B., Abraham A. (eds) *International Conference on Intelligent and Smart Computing in Data Analytics. Advances in Intelligent Systems and Computing*, vol 1312.
- [15]Sandeep Pande and Manna Sheela Rani Chetty, "Analysis of Capsule Network (Capsnet) Architectures and Applications", *Journal of Advanced Research in Dynamical and Control Systems*, Vol. 10, No. 10, pp. 2765-2771, 2018.
- [16]Pande, Sandeep Dwarkanath et al. 'Shape and Textural Based Image Retrieval Using K-NN Classifier', *Journal of Intelligent & Fuzzy Systems*, vol. 43, no. 4, pp. 4757-4768, 2022