



Innoverse – Student and Startup Collaboration Platform

Arjun Singh¹, Parth Borle², Moulik Johari³, Manav Gaikwad⁴, Mr. Sunil Dodake⁵

¹Student, Information Technology, Vidyalankar Polytechnic, Wadala

²Student, Information Technology, Vidyalankar Polytechnic, Wadala

³Student, Information Technology, Vidyalankar Polytechnic, Wadala

⁴Student, Information Technology, Vidyalankar Polytechnic, Wadala

⁵Faculty, Information Technology, Vidyalankar Polytechnic, Wadala

ABSTRACT:

Innoverse is an innovative collaboration platform designed to bridge the gap between startups and final-year students. By connecting real-world industry challenges with academic talent, Innoverse creates a dynamic ecosystem where startups can post problem statements and students submit creative, tailored solutions. This platform not only provides startups with fresh ideas and low-cost innovation but also offers students invaluable hands-on experience, professional recognition, and career-building non-monetary rewards. By enabling direct engagement, Innoverse transforms academic projects into practical, industry-relevant solutions that drive innovation.

Keywords: Student and Startup Collaboration, Collaboration, Project Management, GitHub, API, Startups, Student, Software.

Introduction:

In today's competitive market, startups face the dual challenge of accessing innovative solutions while managing limited resources. Simultaneously, final-year students possess a wealth of theoretical knowledge but often lack real-world experience. Innoverse emerges as a solution to this problem by creating a structured environment where startups and students can collaborate effectively. By enabling direct engagement, Innoverse transforms academic projects into practical, industry-relevant solutions that drive innovation.

Core Features:

Enhance Collaboration: Provide a platform for meaningful interaction between startups and students.

Real-World Exposure: Offer students a chance to work on actual industry problems, enhancing their learning experience.

Innovation Delivery: Supply startups with fresh perspectives and innovative solutions through student proposals.

Career Building: Award students with non-monetary incentives such as certifications and recommendations to boost their employability.

Motivation

The primary motivation behind Innoverse is to address the disconnect between academic learning and industry demands. By tapping into student creativity and leveraging startup challenges, the platform fosters a symbiotic relationship where both parties benefit—startups gain cost-effective innovation, and students acquire skills that prepare them for the professional world.

Review of Literature:

We conducted extensive surveys on Twitter, engaging with various startups to understand their challenges and needs. The feedback revealed that many startups are on the lookout for innovative talent but struggle with the inefficiencies of traditional hiring and networking channels. The consensus was clear: a dedicated, structured platform that connects startups directly with academic talent would significantly enhance their ability to source fresh, creative solutions.

Sr. No	Name of Application	Description	Facilitates Startup-Student Collaboration
1	LinkedIn	A professional networking site that connects professionals, recruiters, and job seekers.	No
2	GitHub	A platform for developers to share code, collaborate on projects, and manage repositories.	No

3	Devfolio	A hackathon and project showcase platform that connects innovators with opportunities.	No
4	Kaggle	A data science competition platform that fosters collaborative problem solving among experts.	No
5	Innoverse	A dedicated web app connecting startups with final-year students to collaborate on real-world challenges	Yes

Table 1: Comparative study of Product Tracking Application

In our literature review, we examined platforms like LinkedIn, GitHub, Devfolio, and Kaggle to understand their collaborative features and limitations. While these platforms serve various aspects of professional networking, coding collaboration, and project showcases, none specifically cater to the unique needs of connecting startups with final-year students for real-world problem solving. Innoverse fills this gap by offering a dedicated environment that not only facilitates this collaboration but also provides structured project management, real-time tracking, and certification, ultimately enhancing practical learning and innovation.

Methodology :

System Design

The system design of Innoverse is structured to ensure clarity and scalability. It includes a detailed use case diagram that illustrates the interactions among startups, students, and administrators, an ER diagram that defines the relationships between key data entities, and a flow diagram that maps out the overall system processes and user journeys. This integrated architectural framework not only guides the development process but also lays the foundation for future enhancements.

ER Diagram:

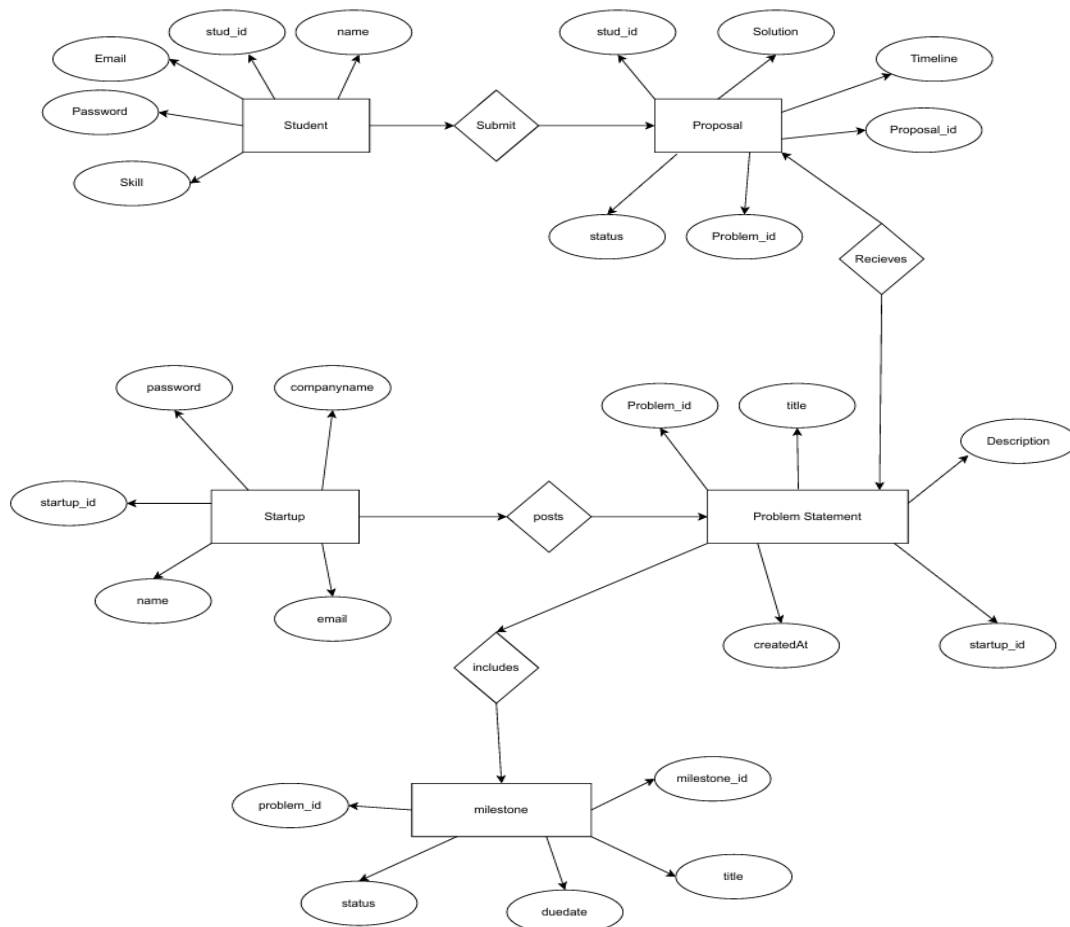


Fig. ER Diagram

Usecase Diagram:

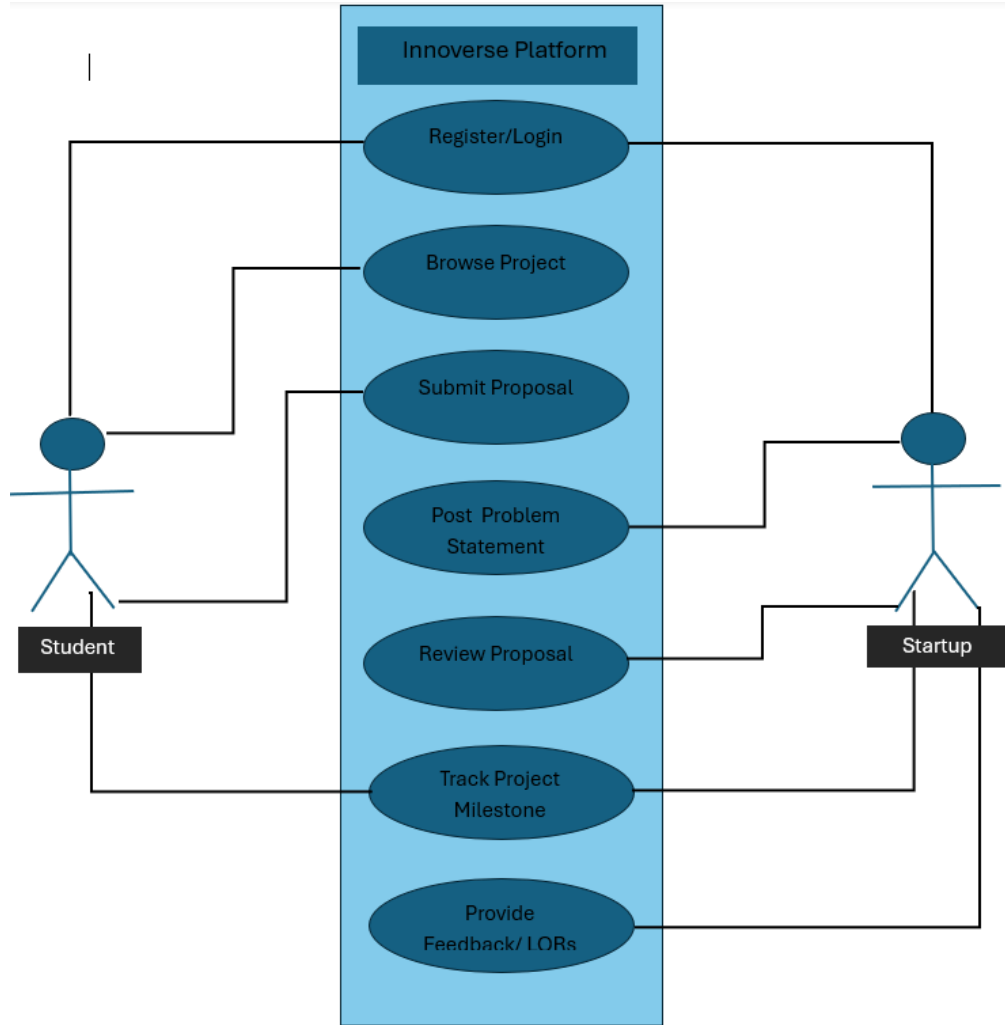


Fig. Usecase Diagram

Flowchart Diagram:

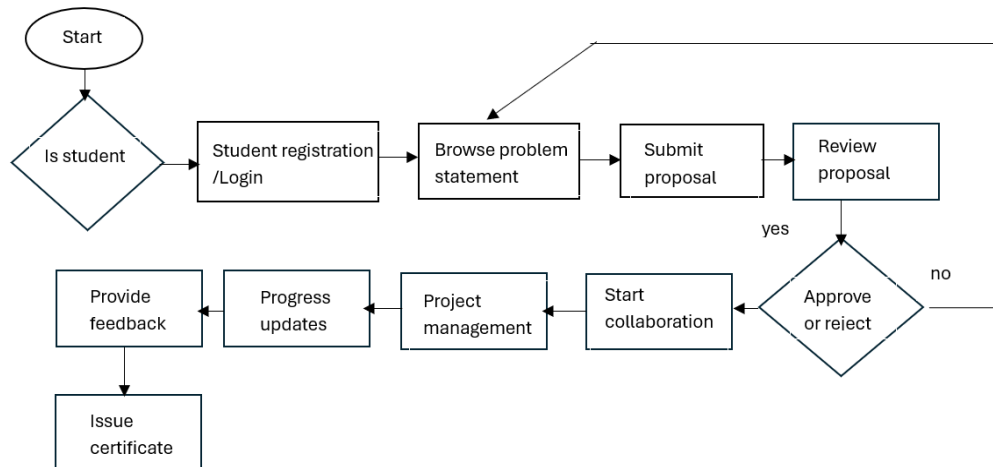


Fig. flowchart Diagram

The system design of Inniverse is built on a modular architecture that segregates core functionalities—like authentication, project management, and notifications—into independent components interacting through RESTful APIs. Leveraging Node.js, Express.js, and MongoDB ensures efficient, asynchronous processing and scalable data storage. Robust security measures, including OAuth-based authentication and data encryption, protect sensitive information, while the layered design approach simplifies maintenance and future enhancements, ultimately delivering a seamless, real-time collaborative experience for both startups and students.

Frontend Modules:

- **User Interface (UI):** An intuitive interface that allows easy navigation, role-based dashboards, and clear access to features like project posting, proposal submission, and progress tracking.
- **Role Selection & Authentication:** A secure login system using GitHub that directs users to the appropriate dashboard based on their role (student or startup), ensuring streamlined access.
- **Project Management Dashboard:** Displays real-time updates on project status, milestones, feedback, and notifications to keep users informed throughout the collaboration process.
- **Interactive Collaboration Tools:** Integrated discussion forums and messaging systems that facilitate real-time communication and feedback between startups and students.

Backend Components:

- **Server Application:** Processes business logic, handles project submissions, and manages workflows for notifications, feedback, and certificate issuance.
- **API Endpoints:** Facilitates smooth communication between the frontend and backend, ensuring real-time data exchange for project management and user authentication.
- **Database Management:** Securely stores user profiles, project details, proposals, project logs, and feedback data, ensuring data integrity and accessibility.
- **Real-Time Data Processing:** Continuously updates project statuses, notifications, and communication exchanges to provide an up-to-date collaboration environment.
- **Security & Access Control:** Implements secure OAuth-based authentication, data encryption, and role-based permissions to protect user data and ensure privacy.
- **Error Handling & Logging:** Monitors system performance, logs errors, and ensures platform reliability through robust error management.

By combining an intuitive user interface, secure role-based access, real-time project tracking, and a robust backend architecture, Innoverse delivers a seamless collaboration experience that effectively connects startups with talented final-year students, driving innovation and successful project outcomes.

Results :

Innoverse has demonstrated strong performance and user satisfaction during pilot testing, effectively bridging the gap between startups and final-year students. The integration of GitHub authentication with role-based dashboards has streamlined onboarding, while the real-time project tracking and feedback modules have accelerated decision-making and improved project outcomes. Users reported that the intuitive interface and efficient notification system greatly enhanced their collaboration experience. Preliminary data indicates a noticeable reduction in project turnaround times and an increase in engagement levels from both startups and students. Overall, these results validate our design approach and underscore Innoverse's potential to foster innovation and practical learning, paving the way for broader adoption and future enhancements.

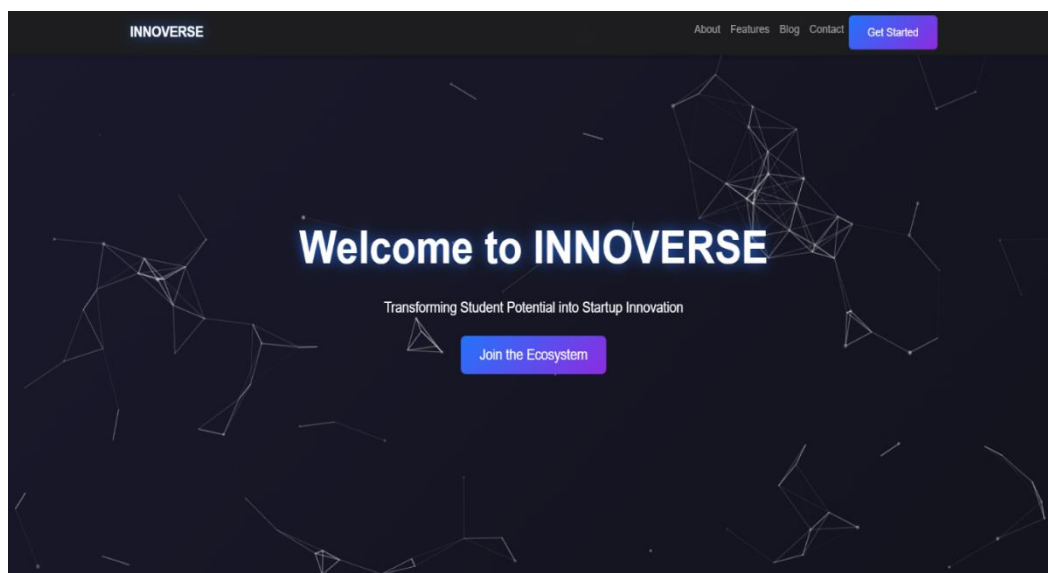


Figure 1 : Home/Landing Page

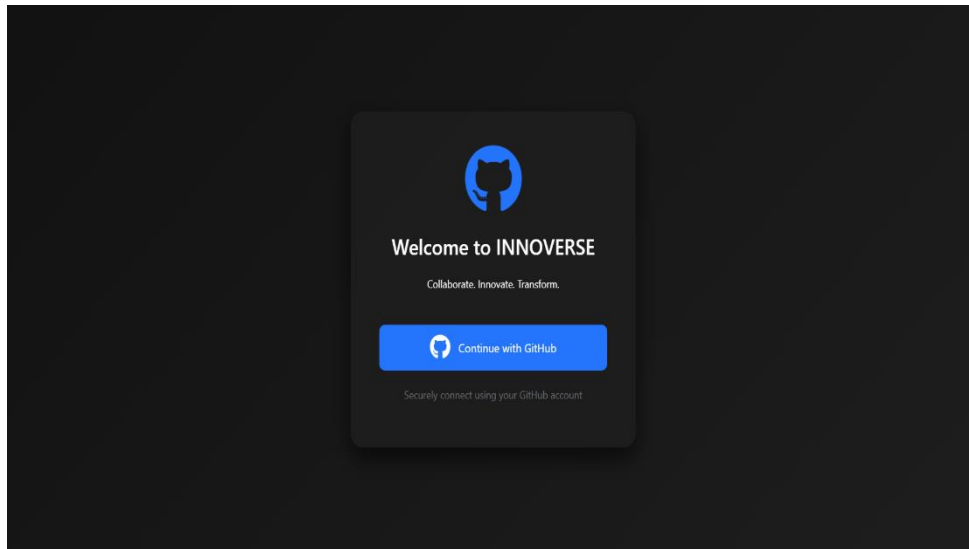


Figure 2: - Admin Page

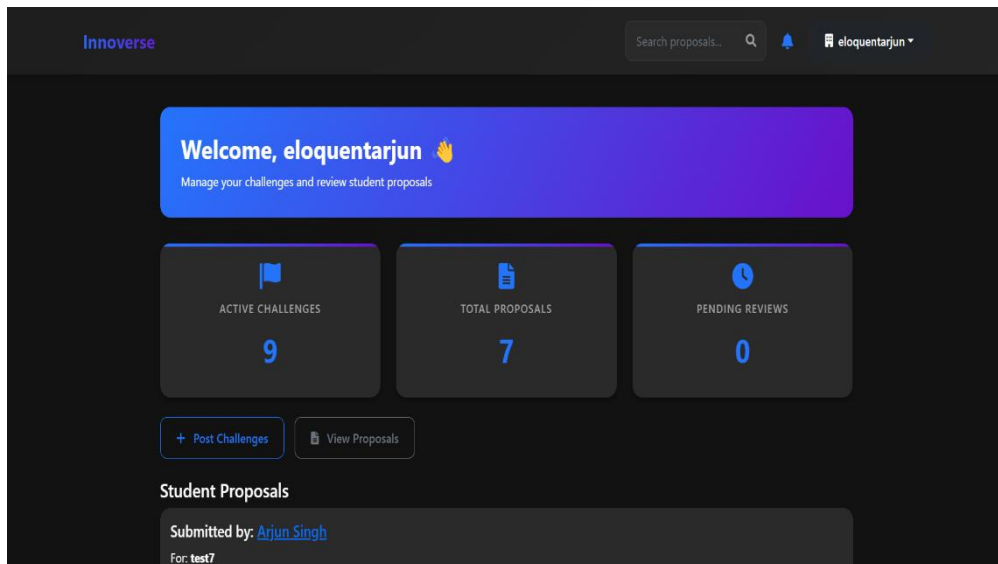


Figure 3 : Startup Dashboard

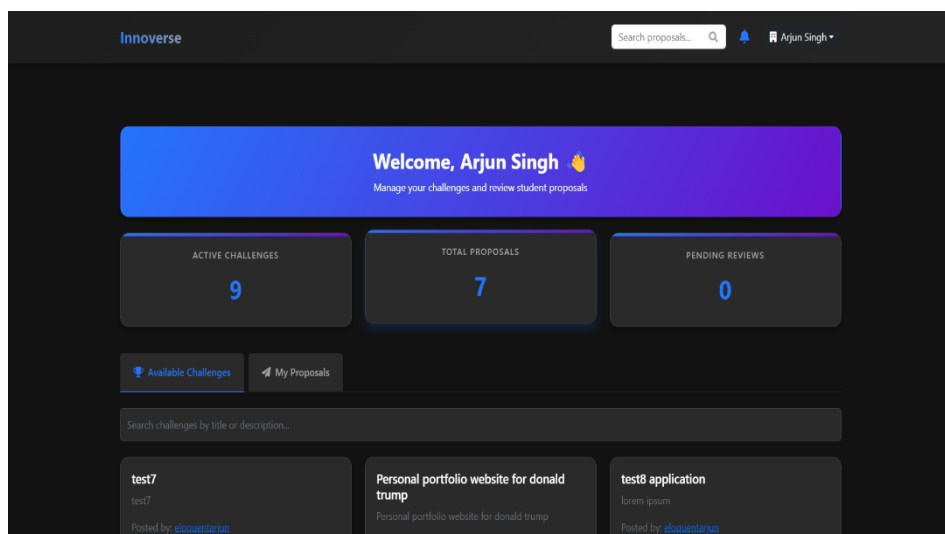


Figure 4 : Student Dashboard

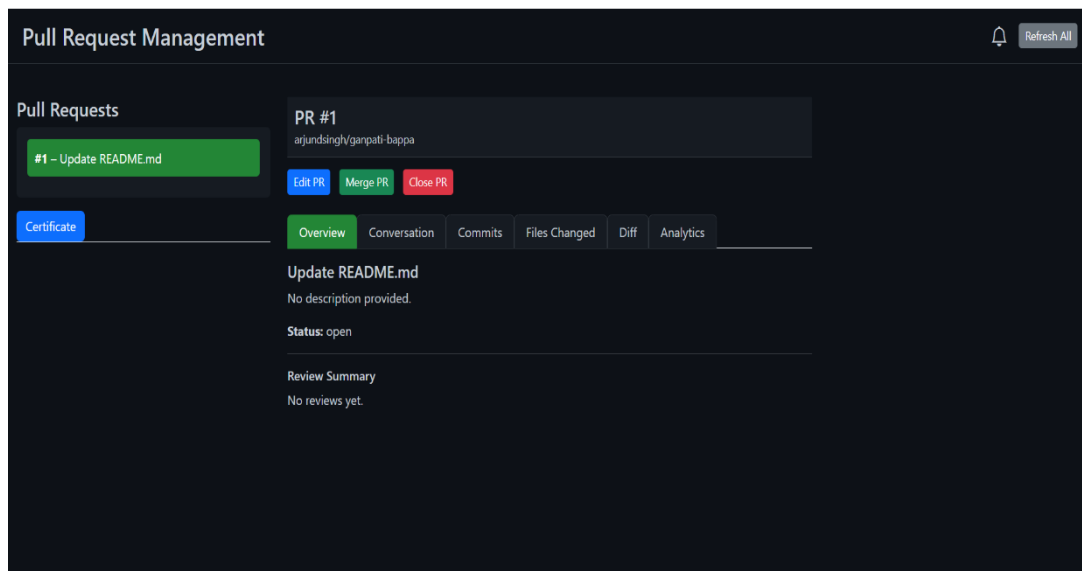


Figure 5 : Project Tracking Dashboard

Conclusion:

Innovverse has successfully established a platform that bridges the gap between startups and academic talent, creating a space where real-world challenges are transformed into practical learning opportunities. By leveraging secure GitHub-based authentication, role selection, and company email verification, the platform ensures that both startups and students access an efficient, trustworthy system. With a comprehensive dashboard that offers real-time project tracking, in-app notifications, and an integrated feedback and certification mechanism, Innovverse not only enhances project management but also motivates and recognizes student contributions. Ultimately, the platform enriches academic curricula with hands-on experience while providing startups with innovative, cost-effective solutions. With a robust future scope that includes mobile app development, AI-driven matching, and advanced collaboration tools, Innovverse is poised to redefine industry-academic collaboration and foster continuous innovation for years to come.

REFERENCES:

1. <https://nodejs.org/>
2. <https://www.mongodb.com/docs>
3. <http://127.0.0.1:5000/>
4. <https://expressjs.com/>
5. <https://getbootstrap.com/docs/5.3/getting-started/introduction/>
6. <https://ejs.co>