



International Journal of Research Publication and Reviews

Journal homepage: www.ijrpr.com ISSN 2582-7421

Empowering Communities: A Comprehensive Analysis of Effective Strategies and Essential Components in Community Care Delivery

Neha Mishra¹, Ankush Patel², Uday Singh Kushwaha³, Neelesh Shrivastava⁴

^{1,2} B.tech Student Department of Computer Science, Vindhya Institute of Science and Technology, Satna(M.P.)

^{3,4} Assistant Professor Department of Computer Science Engineering Vindhya Institute of Science and Technology, Satna(M.P.)

ABSTRACT:

In recent times, community care has gained significant attention as a healthcare delivery paradigm because of its ability to offer individuals in their local areas comprehensive and easily accessible services. This essay provides a summary of community care strategies, highlighting its emphasis on providing comprehensive, person-centered support to people with a range of healthcare requirements, such as those who have mental health issues, impairments, or chronic illnesses. The paper analyses essential elements of successful community care programs, such as case management, interdisciplinary collaboration, and integration with current healthcare systems, based on a review of the literature and empirical data. It also covers how caregiver engagement, social support networks, and community resources can improve the wellbeing and quality of life for service users.

Community care has garnered considerable interest as a healthcare delivery paradigm in recent times due to its capacity to provide people in their local communities with comprehensive and conveniently accessible services. In summarizing community care strategies, this essay emphasizes their focus on offering all-encompassing, person-centred support to individuals with a variety of healthcare needs, including those with mental health disorders, disabilities, or chronic illnesses. Based on a study of the literature and empirical data, the report explores key components of effective community care programs, including case management, interdisciplinary collaboration, integration with current healthcare systems. It also discusses how social support networks, community resources, and caregiver engagement can enhance service users' quality of life and overall wellbeing.

Keyword: Case management, assertive community treatment, community care

I. Introduction:

Community care has garnered considerable interest as a healthcare delivery paradigm in recent times due to its capacity to provide people in their local communities with comprehensive and conveniently accessible services. In summarizing community care strategies, this essay emphasizes their focus on offering all-encompassing, person-centered support to individuals with a variety of healthcare needs, including those with mental health disorders, disabilities, or chronic illnesses. Based on a study of the literature and empirical data, the report explores key components of effective community care programs, including case management, interdisciplinary collaboration, and integration with current healthcare systems. It also discusses how social support networks, community resources, and caregiver engagement can enhance service users' quality of life and overall wellbeing.

The real test, though, will be to see how well these elements meet the various demands of patients as well as caregivers. This introduction lays the groundwork for a more thorough examination of the "Community Care" system, emphasizing the vital role that functionality plays in establishing the system's efficacy and the fundamental relevance of clarity in setting goals. A more nuanced understanding of the system's impact on healthcare and caregiving practices can be attained by a thorough evaluation of its features and alignment with aims.

II. Related work

The assessment approaches used to determine the efficacy of healthcare systems have been examined in earlier studies. Research has indicated that precisely establishing goals and quantifiable results is crucial for appropriate assessment. Researchers have also looked into how technology may help carers and enhance the experience of providing care. Numerous platforms and tools intended to improve coordination, communication, and resource management among caregivers have been the subject of research in this field. In addition, a number of scholarly works have examined various community-based healthcare delivery methods, such as the "Community Care" system. Research has examined how well different strategies

work to improve patient outcomes, lower healthcare costs, and increase access to care. The literature on healthcare has studied the idea of patient-centered care in great detail.

Scholars have investigated methods for incorporating patients in the decision-making process regarding their treatment and customizing services to fulfill their specific requirements. The growing accessibility of healthcare data has prompted scholars to explore the application of data analytics methodologies to enhance the quality of care and decision-making procedures. Research has looked at the use of data analytics in projects for quality improvement, resource allocation, and predictive modeling. These connected works offer insightful viewpoints and useful approaches that help guide the assessment and enhancement of the "Community Care" system.

III.ER-diagram

An Entity Relationship Diagram (ERD) is a visual representation of the relationships among entities in a database. It illustrates how different entities, such as tables in a relational database, are connected through relationships, typically depicted by lines connecting them. Entities represent objects or concepts, while relationships define how these entities interact. ERDs are crucial in database design, aiding in the clear depiction of data structures and facilitating effective communication between stakeholders during the development and maintenance of database

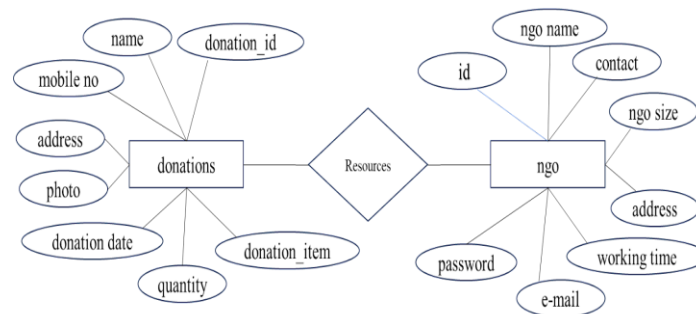


Fig: Er-diagram

IV.Drawback

- Evaluation challenges: It's hard to measure the impact of the "Community Care" system due to unclear objectives and outcomes.
- Technology usability issues: Caregiver support technologies may not be easy to use for everyone, especially those with limited tech skills.
- Inconsistent implementation: The system's effectiveness may vary across different communities, making it hard to generalize its success.
- Patient-centred care barriers: Factors like healthcare system constraints and patient engagement hurdles can hinder the delivery of personalized care.
- Data quality and privacy concerns: While data analytics can help improve care, issues with data accuracy and privacy may limit its usefulness.

V. Proposed work

The planned effort intends to address a number of significant issues related to the "Community Care" system that have been noted in earlier studies. First and foremost, it is imperative to have a strong assessment system with well-defined goals and quantifiable results. With the use of this framework, a thorough evaluation of the system's effects on patient care, caregiver productivity, and administrative duties will be possible, offering insightful information on its efficacy.

The usability and accessibility of caregiver assistance technologies within the "Community Care" system is another important issue that has to be addressed. It may be difficult for many people to use these technologies efficiently, especially those with low levels of technological ability. As a result, efforts will focus on making interfaces more user-friendly, offering assistance and training for using technology, and making sure that it can accommodate a range of user requirements and preferences.

Significant obstacles are also presented by inconsistent use of community-based healthcare models like the "Community Care" system. To find the causes of these discrepancies and create plans for standardizing implementation procedures, research will be done. This may entail making sure that care is provided more consistently and addressing contextual issues that affect outcomes in various communities.

Another important goal of the proposed work is to remove obstacles to patient-centered care. This will entail locating and removing barriers that prevent the "Community Care" system from providing individualized care. Implementing training programs for healthcare professionals, enhancing patient communications, and utilizing technology to support patient participation and collaborative decision-making are some possible strategies. Last but not least, maintaining data privacy protection and quality assurance is critical to the "Community Care" system's efficient operation. There will be steps taken to guarantee the accuracy and consistency of the data utilized in analytics and decision-making. Regulation-compliant procedures that prioritize patient privacy will be created for the gathering, storing, and sharing of data.

In conclusion, by addressing evaluation issues, enhancing technology accessibility and usability, standardizing implementation procedures, removing obstacles to patient-centered care, and guaranteeing data quality assurance and privacy protection, the proposed work seeks to improve the efficacy of the "Community Care" system. These initiatives will help provide excellent, person-centred care in a community context.

VI. Summary and Discussion

The project centres on the development of a web application aimed at providing users with a dynamic and interactive platform. The core focus lies in creating a seamless user experience through efficient data handling and intuitive interface design.

Key aspects of the project include:

- User Interface Design: Emphasis is placed on crafting a visually appealing and user-friendly interface that enhances usability and engagement.
- Functionality: The web application is designed to offer various functionalities such as user registration, form submission, data processing, and

content delivery.

- Interactivity: Leveraging JavaScript, the application provides interactive features such as form validation, real-time updates, and dynamic content rendering.
- Backend Processing: Using PHP, the backend processes user input, manages database interactions, and facilitates server-side operations.
- Optimization: Efforts are made to optimize the performance of the web application, ensuring fast loading times and efficient resource utilization.

In discussion, the project's implementation process and challenges encountered are analyzed. This includes considerations such as ensuring data integrity, managing user authentication, and handling potential security vulnerabilities. Additionally, the effectiveness of design choices and functionalities in meeting user needs and expectations is evaluated.

Future directions for the project may involve further enhancements to the user interface, expansion of features to cater to additional user requirements, and continuous optimization for improved performance and scalability. Moreover, considerations for ongoing maintenance and updates to keep the application relevant and secure are also highlighted. Overall, the summary and discussion provide insights into the project's objectives, execution, and potential avenues for future development.

VII. Conclusion

In conclusion, the web application project successfully creates a user-friendly platform with interactive features. Despite challenges, such as data management complexities, the project demonstrates resilience and adaptability. Future enhancements may include refining existing features and optimizing performance. Overall, the project lays a strong foundation for delivering value to users and driving positive outcomes in the digital space.

VIII. Future Scope

In the future, the web application could be enhanced by integrating additional features like social media integration and chat support. Optimizing for mobile devices and implementing advanced security measures are also essential steps. Ongoing efforts to optimize performance and integrate with external APIs can further enrich the user experience. User feedback will continue to drive iterative improvements, while localization efforts can expand the application's global reach. Overall, these enhancements will ensure the application remains competitive and relevant in the digital space.

IX. References

1. Allport, G. W. (1954) *The Nature of Prejudice*. New York: Addison-Wesley. Google Scholar
2. Berkowitz, R., Shavit, N. & Leff, J. P. (1990) Educating relatives of schizophrenic patients. *Social Psychiatry and Psychiatric Epidemiology*, 25, 216–220. CrossRefGoogle ScholarPubMed
3. Cumming, E. & Cumming, J. (1957) *Closed Ranks – An Experiment in Mental Health Education*. Harvard University Press. CrossRefGoogle Scholar
4. Dunn, M., O'Driscoll, C., Dayson, D., *et al* (1990) The TAPS Project. 4: An observational study of the social life of long-stay patients. *British Journal of Psychiatry*, 157, 842–848. CrossRefGoogle ScholarPubMed
5. Gatherer, A. & Reid, J. J. A. (1963) *Public Attitudes and Mental Health Education*. Northamptonshire Mental Health Project. Google Scholar
6. Lewin, K. (1952) Group decision and social change. In *Readings in Social Psychology* (eds Swanson, G., Newcomb, T. & Hartley, E.). New York: Henry Holt & Co. Google Scholar
7. Marks, J. (1994) The re-emergence of antipsychiatry. *Hospital Update*, 20, 187–190. Google Scholar
8. Norusis, M. J. (1988) *SPSS/PC + V2.0 Base Manual*. Chicago: SPSS Inc. Google Scholar
9. Olmsted, M. S. (1959) *The Small Group*. New York: Random House. Google Scholar
10. Taylor, M. S. & Dear, M. J. (1981) Scaling community attitudes toward the mentally ill. *Schizophrenia Bulletin*, 7, 225–240. CrossRefGoogle ScholarPubMed
11. Wing, J. K., Cooper, J. E. & Sartorius, N. (1974) *Measurement and Classification of Psychiatric Symptoms*. Cambridge: Cambridge University Press. Google Scholar
12. Wolff, G., Pathare, S., Craig, T., *et al* (1996a) Who's in the lions' den? The community's perception of community care for the mentally ill. *Psychiatric Bulletin*, 20, 68–71. CrossRefGoogle Scholar
13. Wolff, G., Pathare, S., Craig, T., *et al* (1996b) Community attitudes to mental illness. *British Journal of Psychiatry*, 168, 183–190. CrossRefGoogle ScholarPubMed
14. Wolff, G., Pathare, S., Craig, T., *et al* (1996c) Community knowledge of mental illness and reaction to mentally ill people. *British Journal of Psychiatry*, 168, 191–198. CrossRefGoogle ScholarPubMed
15. Wykes, T. & Sturt, E. (1986) The measurement of social behaviour in psychiatric patients: an assessment of the reliability and validity of the SBS schedule. *British Journal of Psychiatry*, 148, 1–11. CrossRefGoogle ScholarPubMed