



“DIABETES AND ITS TREATMENT”

¹SANA NUSARAT PRAWEEEN, ²Dr. HIMANI TIWARI, ³Dr. Gaurav Kumar Sharma, ⁴Prof. (Dr.) Kaushal K. Chandrul

¹B. PHARMA (FINAL YEAR), ²SUPERVISOR, ³HOD, ⁴PRINCIPAL

Mewar University, India.

E-mail :- sanaparveenbgp@gmail.com

Mobile No :- 9304038875

ABSTRACT:

Diabetes mellitus is a metabolic disease due to an illness in insulin secretion, insulin movement or both. The situation itself introduces a want for patient's life-style adjustment to the disorder and some of ordinary healing and diagnostic restrictions. The most important indication of diabetes mellitus is a hyperglycemia in blood that's because of irrelevant pancreatic insulin secretion or low insulin-directed fostering of glucose with the aid of using goal cells. It is silent killer disorder and influences tens of thousands and thousands of human beings withinside the world. It is envisioned that during 2010 there has been globally 285 million human beings tormented by this disorder. This range is envisioned to growth to 430 million withinside the absence of higher manipulate or cure. Different varieties of diabetes mellitus, kind 1, kind 2, gestational diabetes and different varieties of diabetes mellitus are in comparison in phrases of diagnostic criteria, etiology and genetics. As the disorder progresses tissue or vascular harm guarantees main to intense diabetic headaches including retinopathy, neuropathy, nephropathy, cardiovascular headaches and ulceration. Currently to be had pharmacotherapy for the remedy of diabetes mellitus consists of insulin and hypoglycemic agents. These capsules act with the aid of using growing the secretion of insulin shape pancreas or decreasing plasma glucose concentrations with the aid of using growing glucose uptake and lowering gluconeogenesis. Comobrid intellectual sicknesses can similarly negatively have an effect on the path of diabetes. They are specifically depression, tension problems, consuming problems and cognitive problems together with dementia. Various natural capsules had been additionally proved powerful because of their useful contents in remedy of diabetes. This article makes a speciality of the causes, types, prognosis and remedy of diabetes.

Keywords: Diabetes, Classification of diabetes, Type 1 diabetes, Type 2 diabetes, Gestational diabetes, Diagnosis, Etiology, Genetics

INTRODUCTION

Diabetes mellitus (DM) is a metabolic sickness in which in human frame does now no longer produce or well makes use of insulin, a hormone this is required to transform sugar, starches and different meals into energy. Absence or decreased insulin in flip ends in chronic abnormally excessive blood sugar and glucose in tolerance. It might be an oldest ailment recognized to man. It is likewise referred as black-dying from the 14th century. In human beings with diabetes, blood sugar degrees stay excessive. This can be because of insulin isn't always being produced at all, isn't always made at enough degrees, or isn't always as powerful because it ought to be. The maximum not unusualplace types of diabetes are kind 1 diabetes (5%), that's an autoimmune sickness, and kind 2 diabetes (95%), that's related to weight problems. Gestational diabetes is a shape of diabetes that takes place in pregnancy, and different types of diabetes are very uncommon and are resulting from unmarried gene mutation.

Types of diabetes

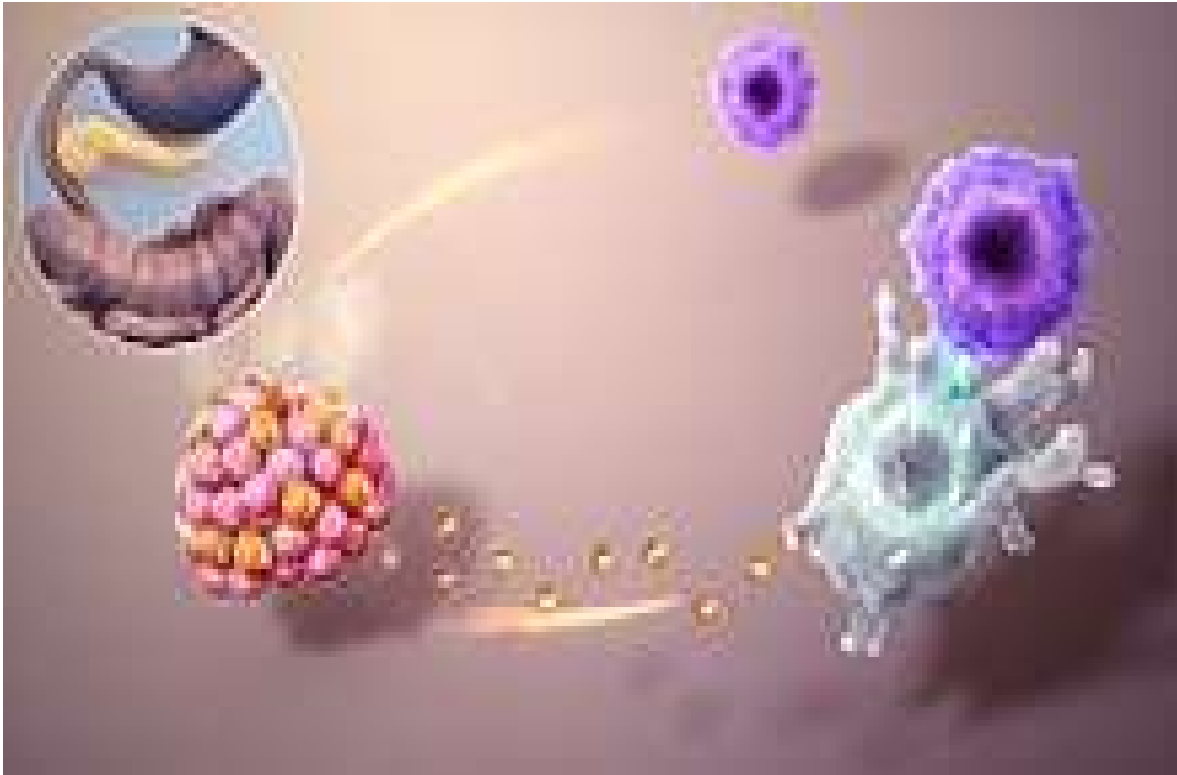
1. Type 1 diabetes
2. Type 2 diabetes
3. Gestational diabetes

Other type of diabetes

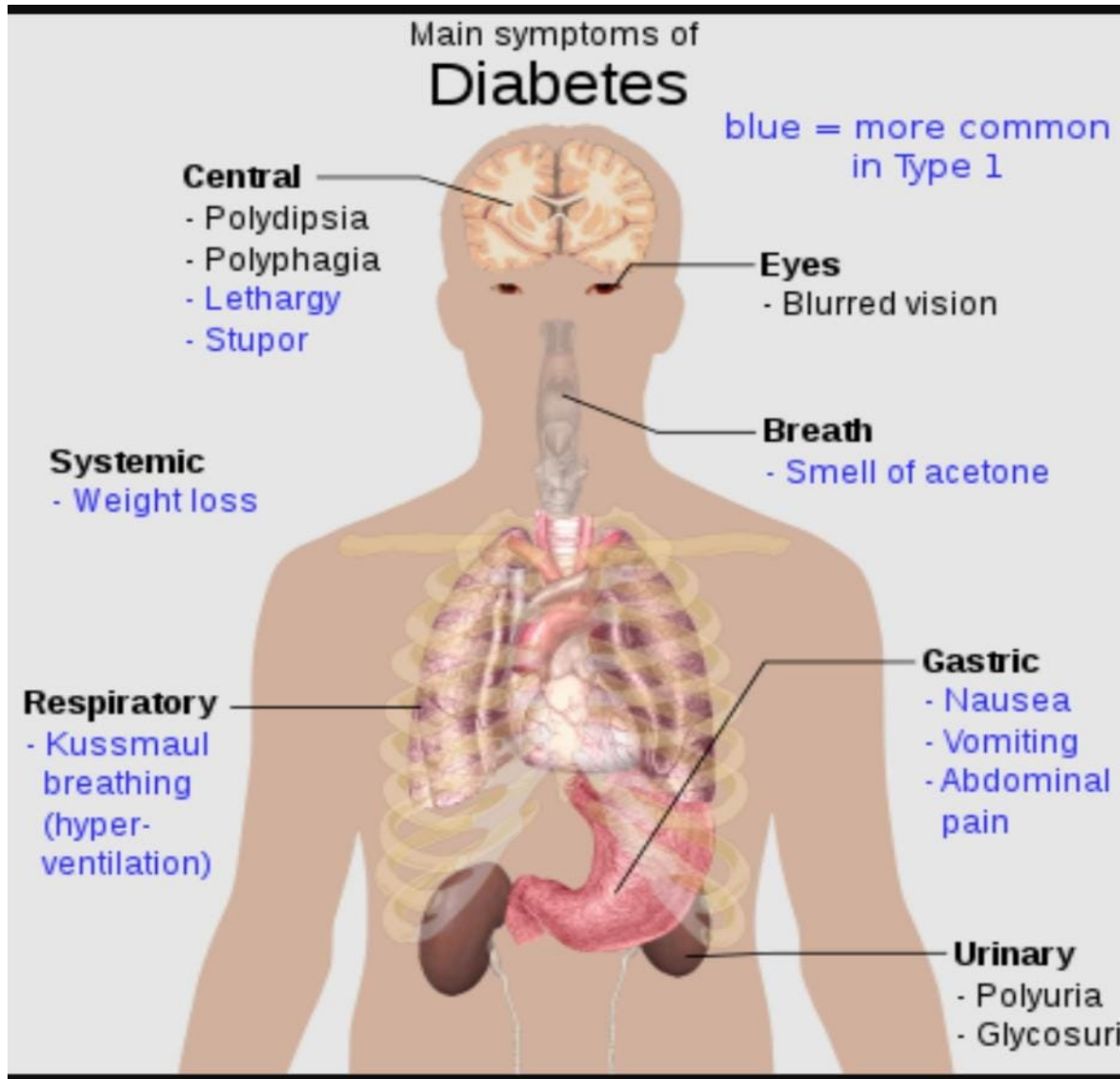
1. Diabetes LADA
2. Diabetes MODY
3. Double diabetes
4. Brittle diabetes
5. Diabetes insipidus
6. Neonatal diabetes mellitus
7. Mixed pathologies in T1DM with weight problems and insulin resistance

Type 1 Diabetes – It is a continual autoimmune ailment related to selective destruction of insulin generating pancreatic β -cells. When there may be transplantation of pancreas from dual donors to continual diabetic dual recipients within the absence of immune suppression is complex because of improved heterogeneity of pancreatic lesions of β -cells that are swiftly annihilated, after which there may be improvement of huge insulinitis via way of means of the use of infiltrating T lymphocytes which measures an amnestic autoimmune reaction. Type 1 diabetes is frequently known as insulin-dependent (IDDM) or juvenile-onset diabetes.

Symptoms – Frequent urination, thirst, weight loss, excessive fatigue, acetone breath, nausea and vomiting, blurred imaginative and prescient and itchiness within the genital area.



Type 2 Diabetes – Type 2 diabetes mellitus is likewise referred to as adult-onset diabetes. The innovative insulin secretory illness at the heritage of insulin resistance. People with this sort of diabetes often are immune to the motion of insulin. Globally, it influences 5-7% of the world's population. The ailment is typically managed thru nutritional therapy, workout and hypoglycemic agents. This is the maximum not unusualplace shape of diabetes mellitus and is incredibly related to a own circle of relatives records of diabetes, older age, weight problems and absence of workout.



Gestational diabetes: It is excessive blood sugar during the pregnancy. It reasons because of insulin-blocking hormone generating through the placenta. Get assist from your medical doctor and take easy steps to control your blood sugar. After toddler is born, gestational diabetes generally is going away. Gestational diabetes makes you much more likely to broaden Type 2 diabetes. Different circumstance wherein your kidney excreted extra fluid out of your body. Clinical significance of GDM lays within the truth that it's miles related to big maternal and fetal morbidity.

Other Type of Diabetes

Diabetes LADA- Latent Autoimmune Diabetes of the adults is autoimmune diabetes described with the aid of using adult-onset, presence of diabetes related autoantibodies, and no insulin remedy requirement for a duration after diagnosis. It is turning into obvious that a share of adults may also have a slowly evolving type of Type 1 diabetes, that is characterised with the aid of using the presence of autoantibodies. Some human beings identified with kind 2 diabetes quickly locate themselves depending on insulin; those human beings may also have a slowly modern shape of kind 1 diabetes or LADA.

DIABETES MODY- Maturity onset diabetes of the younger is an autosomal dominantly inherited kind of diabetes that effects from heterozygous mutations in diverse transcription elements performing within the improvement and maturation of pancreatic β -cells. Characteristics functions of MODY are autosomal inheritance, early onset of diabetes, no symptoms and symptoms associated with the autoimmune system or insulin resistance, and maintenance of endogenous insulin secretion.

Double diabetes- Double diabetes is characterised with the aid of using the incidence of hyperglycemia in kids and younger young people with the mixture of markers usual of each kind 1 and sort 2 diabetes.

Brittle diabetes- Type 1 diabetes is an intrinsically risky situation. A small institution of sufferers with kind 1 diabetes, specially younger women, go through chronically with the aid of using bad metabolic control, characterised with the aid of using a intense instability of glycemia values with common and unpredictable hypoglycemic or diabetic ketoacidosis episodes which can not be attributed to sufferers or clinicians' errors. The great of lifestyles of those sufferers is dramatically compromised specifically due to the frequency of acute events, medical institution recoveries and precocious look of persistent complications. This scientific situation has been described as brittle diabetes.

Diabetes Insipidus –Diabetes insipidus is a sickness wherein big volumes of dilute urine are excreted because of vasopressin deficiency, AVP resistance or immoderate water intake. Polyuria is characterised with the aid of using a urine quantity in extra of 21/m²/24 h or about 150ml/kg/24h at birth, 100-110ml/kg/24h till the age of two years and 40-50 ml/kg/24h withinside the older infant and adult.

Neonatal diabetes mellitus –

- It happens in first six months of life.
- Single gene defect
- Do now no longer produce sufficient insulin
- Do now no longer advantage weight as speedy as expected
- High plasma glucose- mistake for T1DM

Symptoms of diabetes:

- Increase Thirst
- Frequently urination
- Extreme hunger
- Weight loss
- Fatigue
- Polyuria
- Polydipsia
- Glycosuria

Causes of diabetes include-

- Obesity
- Excess glucocorticoids
- Excess boom hormone
- Polycystic ovary diseases
- Mutation of insulin receptor
- Lipodystrophy

Etiology of Diabetes Mellitus

The phrase etiology is derived from Greek phrase “aetiologia”. Hence, etiology is described because the technology of locating reasons and origins wherein a ailment is arise, it includes –

- It is presently believed that the juvenile-onset (insulin dependent) shape has a vehicle mobile immune etiology.
- Viruses can also play a position withinside the etiology of diabetes like coxsackieB.
- Mumps and rubella viruses all were proven to produce morphologic adjustments withinside the islet-mobileular structure.
- The genetic position withinside the etiology of diabetes is controversial. Possibly a genetic trait makes an individual's pancreas greater at risk of one of the above viruses.

Diagnosis of Diabetes Mellitus

The prognosis of diabetes in an asymptomatic concern should neverbe made on the idea of a unmarried peculiar blood glucose value. If a prognosis of diabetes is made, the clinician must sense assured that the prognosis is completely installed considering that the outcomes for the person are huge and lifelong. The prognosis of diabetes mllitus include, urine sugar, blood sugar, glucose tolerance test, renal threshold of glucose, faded glucose tolerance, accelerated glucose tolerance, renal glycosuria, prolonged glucose tolerance curve, cortisone careworn glucose tolerance test, intravenous glucose tolerance test, oral glucose tolerance test.

Treatment Modalities

Management Approaches

Prevention

Ayurvedic emphasised that the primary and predominant precept of prevention in addition to the remedy of any ailment is avoidance of causative factors. This is known as the precept of indaba Parivarjanam in Ayurvedic.

- Restrict the immoderate use of curds, flesh of domestic / aquatic animals and of marshy places, use of milk and milk arrangements, water of rivers and tanks for the duration of rains and floods, new grains, puddings made from jiggery /sugar and intake of kappa Desha exaggerating factors.

- Restrict heavy diets, fatty meals which growth frame weight and lipids / cholesterol.
- Avoid sleep for the duration of daylight and laziness.
- Various arrangements of rice which vegetation inside 60 days java (barley), Godhead (wheat), Korana (grain variety –*Peplum scrobiculatum*) Dhaka (purple gram-Cajamuscajan), Kulattha (horse gram-Doritos biflorus) and Midge (inexperienced gram) with sour and astringent leafy veggies need to be taken.
- Use the oils of Nicoma (*Danti-Baliospermum Montana*), Incubi (*Banalities Egyptian*), Atari (*Lignum usitatisimum*), and Serape (*Mustard-Brasslike* composters) is useful.
- Use the meats of animals that are having anti diuretic properties (shower Muttra!), woodland animals, and woodland birds, are recommended.
- Navapatala (*Tricosanthus devoice*), uncooked banana, Tanduleyaka (*Amaranthus spinouts*), Vistula (*Bathuva-Chenopodium album*), Matsyakshi (*Alternant technology sessile*), sour veggies like Methinks (*Trigonella foenum-graecum*), Karavellaka (*Momordica charantia*); Bemba (*Coccidian India*), Marcia (*Piper unigram*), Sandoval liana (rock salt) need to be used.
- Practice normal exercise/yoga, growth calorie ingesting activities (brisk walking, swimming, cycling, etc.)
- Avoid culmination with excessive easy sugars like banana, cheek (*sapodilla*), grapes, and mango etc.

DRUG THERAPY

Single Drugs

Drugs	Dosage (per dose)	MOA/Vehicle	Duration
Alake (<i>Phyllanthus embolic</i>) - Fruit	3-6 gm	Warm Water	90 days
Harridan (<i>Curcuma long</i>)- Rhizome	1-3 gm	Luke Warm Water	90 days
Maharani (<i>Gymea Sylvester</i>)- Leaf	3-6 gm	Water	90 days
Kumara (<i>Aloe Vera</i>) swards-leaf Pulp	10-15 ml	Water	90 days
Mali swards	10-15ml	water	90 days

Herbal Medicines Approach

Like multi-goal ligands, phytocomplex exploits the “natural shotgun” effect in which multiple components have interaction with different objectives. The multi-objectives method is in evaluation with the “silver bullet” one which refers back to the effect of a unmarried substance performing at a unmarried goal. Several plant extracts have been examined to corroborate their synergistic and multifactorial effects in the direction of DM . Here are represented some of those. Among the natural merchandise that aren't cited on this review, gurmar (*Gymnema sylvestre*), ivy gourd (*Coccinia indica*), cinnamon (*Cinnamomum cassia*), psyllium (*Plantago ovata*), and garlic (*Allium sativum*) deserve a specific point out for his or her healing effects on T2DM.

The maximum beneficial homeopathic treatments withinside the remedy of diabetes are:

- Actium acetum
- Actium acetum
- Argentums metallic
- Argentums nitric
- Arsenic album
- Arsenic iodated
- Bryonies
- Caldaria carbonic
- Chimapila
- China officinal is
- Ignatius

- Lecherics
- Latium acetum
- Lycopodium clavatum
- Nat rum sulphuricum
- Noricum acetum

Diabetes and their Allopathic Medicines:-

Doctors prescribed insulin and insulin analog normally with kind 1 diabetics and additionally with type2 diabetic for remedy of hyperglycemia in component due the modern lack of β -mobileular feature over time , approx 40-80% of people with kind-2 diabetes will in the long run be taken into consideration for insulin remedy which will acquire glycolic targets.

Treatment of Diabetes mellitus:

Types of drug	Working	Example(s)
Biguanides	Reduce the amount of glucose your liver makes and control the blood glucose level	Metformin (Glucophage)
Alpha-glucosidase inhibitors	Slow your body's breakdown of sugars and starchy foods	Acarbose (Precose) and miglitol (Glyset)
DPP-4 inhibitors	Improve your blood sugar without making it drop too low	Linagliptin (Tradjenta), saxagliptin (Onglyza), and sitagliptin (Januvia)
Glucagon-like peptides	To help the produces sufficient amount of insulin by beta cell of pancreas	Dulaglutide (Trulicity), exenatide (Byetta), and liraglutide (Victoza)
Thiazolidinediones	Increase the amount of insulin those reduces the blood glucose at the normal range	Pioglitazone (Actos) and rosiglitazone (Avandia)
Meglitinides	Stimulate your pancreas to release more insulin which is control the blood glucose level in blood	Nateglinide (Starlix) and repaglinide (Prandin)

Simple Management of Diabetes Mellitus in Siddha

- Take decoction of Seventhly (Tinospora) climber in empty stomach.
- Take two fresh coccidian daily.
- 15 ml of gooseberry juice, 15 ml of lemon juice mix together and take twice a day.
- Take powder of fenugreek twice a day with hot water.
- Take young leaves of Eagle marvelous.
- Take bitter gourd juice and leaves juice.
- Take 6 fresh leaves of Andrographis daily.
- Take decoction whole plant of Indian Phyllanthus.
- Take Triphala powder twice a day with hot water

Unani medicine for Diabetes cure

Unani device of drugs may be a totally wealthy supply as a phytomedicine, many unmarried drugs, and compound formulations are utilized in Unani medicinal drug for the treatment of Dhayabitus (diabetes). Phytomedicine utilized in Unani medicinal drug gives an thrilling possibility for the development of recent therapeutics / formulations for DM, which include diverse photochemical corporations consisting of alkaloids, terpenes, and phenolics. Besides hypoglycemic hobby, those drugs additionally have antioxidants, bitter, and different hobby associated to a disturbance in carbohydrate metabolism. They are used withinside the shape of decoctions, infusions, tablets, pills, powder, confection, etc.

COMMON MARKETED FORMULATION OF UNANI MEDICINE FOR TREATMENT OF DIABETES

S. No.	Name	Dosage	Ingredients	P/P and Ph	Manufacturing industry/ pharmacy
1.	Safoof-e-ziabetis	3–6 g bid.	Gudmar booti, jamun	P/P	Hermas Unani Herbal Calicut, India
2.	Cap ziabetis	1–2 cap bid.	Darchini, pan bhadana	P/P	Hermas Unani Herbal Pharmaceuticals, Kerala, India
3.	Cap ziyabaneel	1–2 cap bid.	Gunde-babool, bark of babool, camphor	P/P	Hermas Unani Herbal Pharmaceuticals Kerala, India

4.	Shakrino	2 tablets bid.	Aqaqia, tabasheer, shilajit, Gudmar booti, maghze-jamun, post anar, post gular, kushta khabsulhadeed, kushta marjan, kushta baize-e-murgh, Kushta sadaf, warq nuqra	P/P	Rex remedies Delhi
5.	Kalonji sugar powder	1 tsf tid.	Kalonji powder, tukhm-e-jamun, Gudmar booti, tuqme-katayla, tuqm-e-kasni, tuqme-methi	P/P	Mohammedia Products, Karimnagar, India
6.	Diabeat	1–2 cap bid.	Tukhm-e-kalonji, methi seeds, tukm-e-kasni, neeb	P/P	Hamdard laboratories, Gurugram, India
7.	Diabetoz	2 cap bid.	Asgand, banslochan, chiraita, gilo, Gudmar, HalelaZard, kolanji, jamun, neem, methi seeds, zanjibeel	P/P	Hakeem Baqai's Medicare (p) Ltd.
8.	Dolabi	1 tab bid.	Gudmar-booti, jamun, kushta-baiza-murgh, tukhme-hummaz, aqaqiya, labbabuz, banslochan, kushtajast, kushta khubsul-hadeed, gond safaid	P/P	Hamdard laboratories, Gurugram, India
9.	Gurmar capsules	1 cap bid.	Gudmar booti dried extract	P/P	Dehlvi naturals, Delhi, India
10.	Jamun Sirka	10–15 ml/day	Jamun fruit pulp, water	P/P	Dehlvi naturals Delhi
11.	Kerala capsules	2 cap. daily morning	Karela (bitter melon) dried extract, Karela powder	P/P	Dehlvi naturals Delhi
12.	Karelamunras	10–15 ml bid.	Karela (bitter melon), Jamun	P/P	Dehlvi naturals Delhi
13.	Methi capsules	2 cap bid.	Methi dried extract, methi powder	P/P	Dehlvi naturals Delhi
14.	Qurs-Tabasheer	5 g	Tabasheer, tukhme-khurfa, tukhme-kahu, gule-surkh, gulnar, gile-armani[28]	Ph	Hamdard laboratories, Gurugram, India
15.	Kerala Ras	10 ml bid.	Karela (bitter melon)	P/P	Dehlvi naturals Delhi
16.	Qurs Ziabitis	2 tab bid.	Tukhme-khurfa, rub-us-soos, tabasheer, gile-armani, gul-e-surkh, kishneezkhushk, aqaqia, samag-e-arabi, sandal safaid, sandal surkh, gulnar, camphor (NFUM)	Ph	Dawakhana tibbiya college AMU. Aligarh, India

Conclusion

In the precis finally, we finish that the prevention is higher than remedy. The use of allopathic drug treatments in diabetes which includes insulin and insulin analog, metformin, sulphonylurea, TZDs etc. have numerous aspect consequences and reasons maximum risky form of sickness together with cancer. Natural merchandise eparticularly shaped through plant have determined to be useful in remedy of sickness which includes diabetes and cancer. The plant-primarily based totally merchandise which includes vegetables, fruits, grains, and spices have substantial wide variety of phytochemicals that could offer fitness advantages past fundamental vitamins lessen chance of numerous persistent illnesses the maximum champion reality approximately natural drug treatments haven't any aspect consequences. So, devour for fitness be healthful always.

REFERENCES

1. Deepti B, Sowjanya K, Lidiya B, Bhargavi RS and Babu P.S, "A modern review on Diabetes mellitus: An inhibitory metabolic disorder", *Journal of in silico and in vitro Pharmacology* 2017; 3:1-14.
2. Ozougwu J.C, Obimba K.C, Belonwu C.D and Unakalamba C.B, "The pathogenesis and pathophysiology of type 1 and type 2 diabetes mellitus", *Journal of Physiology and Pathophysiology* 2013; 4(4):46-57.
3. Singh N, Keshewani R, Kumar A. and Dilip D.K., "A review on diabetes mellitus", *The Pharma Innovation journal* 2016; 5(7):36-40.
4. Bastaki S., "Diabetes mellitus and its treatment", *International Journal of Diabetes and Metabolism* 2005; 13:111-134.
5. Baynest H.W., "Classification, pathophysiology, diagnosis and management of diabetes mellitus". *Journal of Diabetes and Metabolism* 2015; 6:5.
6. Siddiqui A.A., Siddiqui S.A., Ahmad S, Siddiqui S, Ahsan I. and Sahu K., "Diabetes: mechanism, pathophysiology and management- A review". *International Journal of Drug Development and Research* 2013; 5(2):1-23.
7. Laugesen E., Ostergaard J.A. and R. DG Leeslie R.D., "Latent autoimmune diabetes of the adult-current knowledge and uncertainty". *Diabetic Medicine* 2015.
8. Anik A, Latli G, Abaci A., and Bober E., "Maturity onset diabetes of the young (MODY): An update". *Journal of Pediatric Endocrinology and Metabolism* 2015; 28(3-4):251-263.
9. Dilorgi N, Napoli F and Elsa A, "Maria Allergi, Irene Olivieri, Enrica Bertelli et al. Diabetes Insipidus – diagnosis and management". *Journal of Hormone Research in Pediatrics* 2012; 77: 69-84.
10. Harikumar K., Kumar B.K., Hemalatha G.J., Kumar M.B. and Steven Fransis Saky Lado S.F., "A review on diabetes mellitus", *International Journal of Novel Trends in Pharmaceutical Sciences* 2015; 5.
11. 7. Alam, Aftab, M. Y. Siddiqui, and M. H. Hakim. "Clinical efficacy of *Withania coagulans* Dunal and *Trigonella foenum-graecum* Linn. In Type 2 diabetes mellitus. *Indian J Tradit Knowle* 2009;8:405-9.
12. 8. Matough FA, Budin SB, Hamid ZA, Alwahaibi N, Mohamed J. The role of oxidative stress and antioxidants in diabetic complications. *Sultan Qaboos Univ Med J* 2012;12:5-18.
13. 9. Prediabetes and Insulin Resistance. Available from: <https://www.niddk.nih.gov/health-information/diabetes/types/prediabetes-insulin-resistance,modified>. [Last accessed on 2009 Aug 21]
14. Quraishi HA, Islam N, Sheeraz M, Iqbal A, Qayyoom R, Bhat S, et al. Unani herbal medicine as an adjuvant therapy in treatment of diabetes mellitus: A review study paripex. *Indian J Res* 2018;7:30-1.
15. Cade WT. Diabetes-related microvascular and macrovascular diseases in the physical therapy setting. *Phys Ther* 2008;88:1322-35.
16. Complications of Diabetes, International Diabetes Federation. Available from: <http://www.idf.org/complications-diabetes>. [Last accessed on 2016 Dec 21].
17. Gupta R, Bajpai KG, Johri S, Saxena AM. An overview of Indian novel traditional medicinal plants with anti-diabetic potentials. *Afr J Tradit Complement Altern Med* 2007;5:1-7.
18. Kantoori GH. Kmil-us-Sana. (Urdu Translation). New Delhi: Idara Kitabus Shifa; Reprint; 2010. p. 469-70.
19. Cryer P E (2012) Minireview; Glucagon in the pathogenesis of hypoglycemia and hyperglycemia in diabetes *Endocrinology* 153; 1039-1048
20. Harris MI, Klein R, Welborn TA, Kneuman MW (1992) ON SET OF NIDDM occurs at least 4-7 year before clinical diagnosis. *Diabetes care* 15; 815-819
21. Gillett MJ(2009) International expert committee report on the role of the assay in the diagnosis care 2009 ; 32(7); 1327-1334 *clinical Biochemistry revision* 30;197-200.
22. Gillett MJ(2009) International expert committee report on the role of the assay in the diagnosis care 2009 ; 32(7); 1327-1334 *clinical Biochemistry revision* 30;197-200.
23. Pollak M (2009) Do cancer cells care if their host & hungry. *Cell Metab* 9: 401-403.
24. Zakikhani M, Dowling R, Fantus IG, Sosenbery N, Pollak M (2006) Metformin is an AMP- Kinase dependor growth inhibitor for breast cancer cells. *Cancer Res* 66: 10269-10273.
25. Dowling RJ, Zakikhani M, Fantus IG, Pollak M, Sosenberg N (2007) Metformin inhibits mammalian target of rapamycin- dependent translation initiation in breast cancer cells. *Cancer Res* 67: 10804- 10812.
26. Burton JD, Goldenberg DM, Blumenthal RD (2008) Potential of peroxisome proliferator activated receptor gamma antagonist compounds as therapeutic agents for a wide range of cancer types. *PPAR Res* 2008: 494161.
27. Tachibana K, Yamasaki D, Ishimoto K, Dol T (2008) The role of PPARs in cancer. *PPAR Res* 2008: 102737.
28. Gerstein HC (2010) Does insulin therapy promote, reduce, or have a neutral effect on cancer. *JAMA* 303: 446-447.

-
30. El Serag HB, Hampol H, Javadi F (2006) The association between diabetes and hepatocellular carcinoma: A systematic review of epidemiological evidence. *Clin Gastroenterol Hepatol* 4: 369-380.
 31. Huxley R, Ansary Maghaddam A, Berrington de Gonzale A, Barzi F, Woodward M (2005) Type-2 diabetes and pancreatic cancer: A meta-analysis of 36 studies. *Br J Cancer* 92: 20762083.
 32. Friberg E, Orsini N, Mantzoros CS, Wolk A (2007) Diabetes mellitus and risk of endometrial cancer. A meta-analysis. *Diabetologia* 50: 1365- 1374.
 33. Larsson SC, Mantzoros CS, Wolk S (2007) Diabetes mellitus and risk of breast cancer: a metaanalysis. *Int J Cancer* 121: 856-862.
 34. Larsson SC, Orsini N, Wolk A (2005) Diabetes mellitus and risk of colorectal cancer: a metaanalysis. *J Natl Cancer Inst* 97: 1679-1686.