



## Placement Cell Management System

*Adarsha S.P<sup>1</sup>, L. Manisha Rani<sup>2</sup>, D. Indu<sup>3</sup>, J.N S Gopika<sup>4</sup>, M. Harini<sup>5</sup>, S. Sohail<sup>6</sup>*

UG Student Sansakrithi School of Engineering, India

### ABSTRACT:

The main aim of the project is to make a placement cell feel ease while dealing with placements, the placement cell deals with the college and the recruitment is through TP cell. The system can maintain student information like grades, courses, endorsements taken from college etc. The details related to students uploaded by the students, and the TP officer for recruitment process .And the whole web page is maintained by the admin. The further task of the placement cell is to maintain the order of the scholars as per their eligibility criteria. It lessen the manual work and saves the time.

**Keywords:** Training, placement, HOD, TP officer, Admin.

### INTRODUCTION

#### Problem statement:

The existing system is for the placement cell to send out mass e-mails are through the presence of posters at a central location. The system requires that a student constantly use their e-mail of the posters to be to remain about the placement schedule. Every company that appears for placements will demand student credentials, and the lack of a digitalization create difficulties for student for so the student have to carry many copies for attend the recruitment process.

#### Objective of project:

In this proposed system, students do not need to worry about more copies of each certificate, instead the system will stores data. In our project, the student details are accessed by the web application TP acts as medium before the student attends the final interview, and for the exam, process is easy to collect the eligible student details based on company criteria.

### PRAPOSAL SYSTEM:

This web portal is used to maintain the placement cell in colleges to save the time. The TNP place an important role recruitment. Placement cell management system has four modules, which helps to perform various operations. The placement and management system has four modules.

#### Advantages:

- This web portal come up with the real information of tutee, which assists TP officer to use the genuine information and real percentage for the student recruitment levels.
- Providing the materials to the students for preparing their campus recruitment exams.
- It provides high security to the data stored in database.

### BLOCK DIAGRAM:

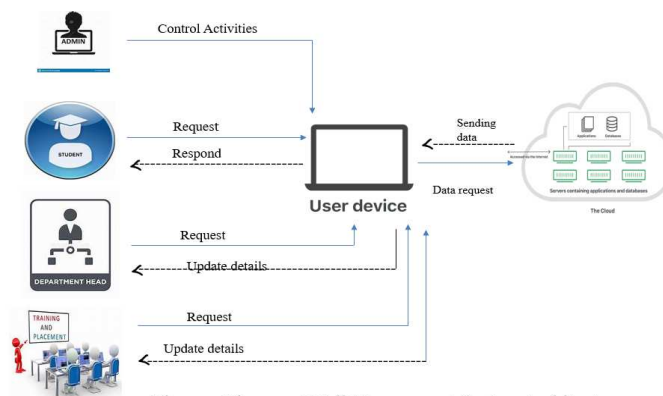


Figure : Placement Cell Management System Architecture

**DESIGN DETAIL**

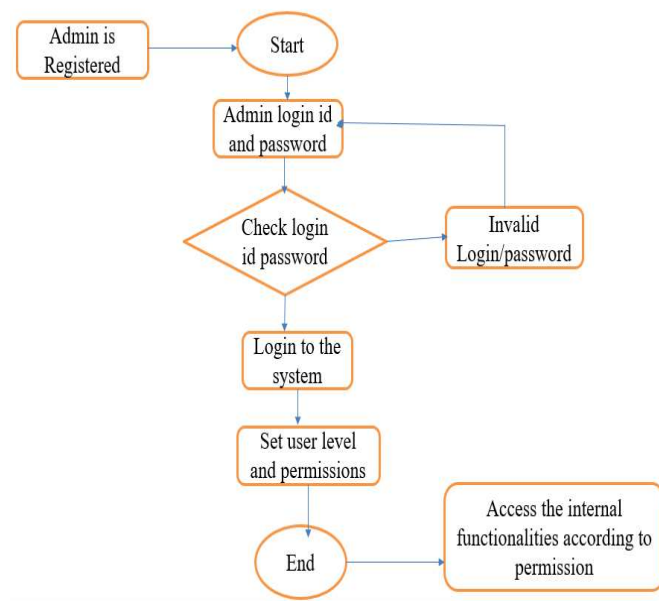
Placement cell management system contains four modules. Admin module, TP officer module, HOD module, Student module. All four modules play a vital role in this project. In this module, the admin will login by using username and password. Once the admin is logged in the web portal, he needs to take good care of the data stored in the database and have to provide the security. Admin has total access to control the web page and he/she can use a query to generate login credentials for HoD and TP officer. In the placement cell management system, there are four modules as follows.

- Admin module
- TPO module
- HOD module
- Student module

**Admin module:**

Admin plays an important role in this project. In this module, the admin will login by using a username and password. Once the admin is logged in the web page, it contains student details, company details, and HOD details. Admin has total access to control the web page and he/she can use a query tab to get all the information, which he needs, for campus drives. Admin can also send bulk messages and e-mails to the students.

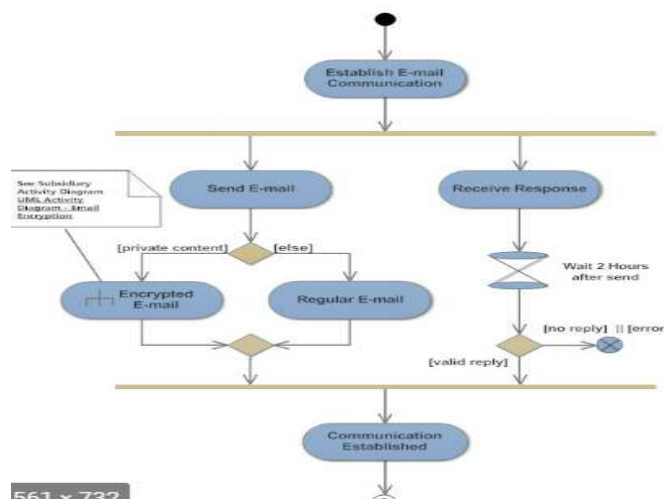
**Activity diagram:**



**TPO Module:**

The TP officer was also called as training and placement officer. The TP officer maintains the data related to various drives and students who attended for drives. The TP officer can also update the information and student placement details. The TPO sends messages to the students related to the details of the company.

**TPO Activity Diagram:**



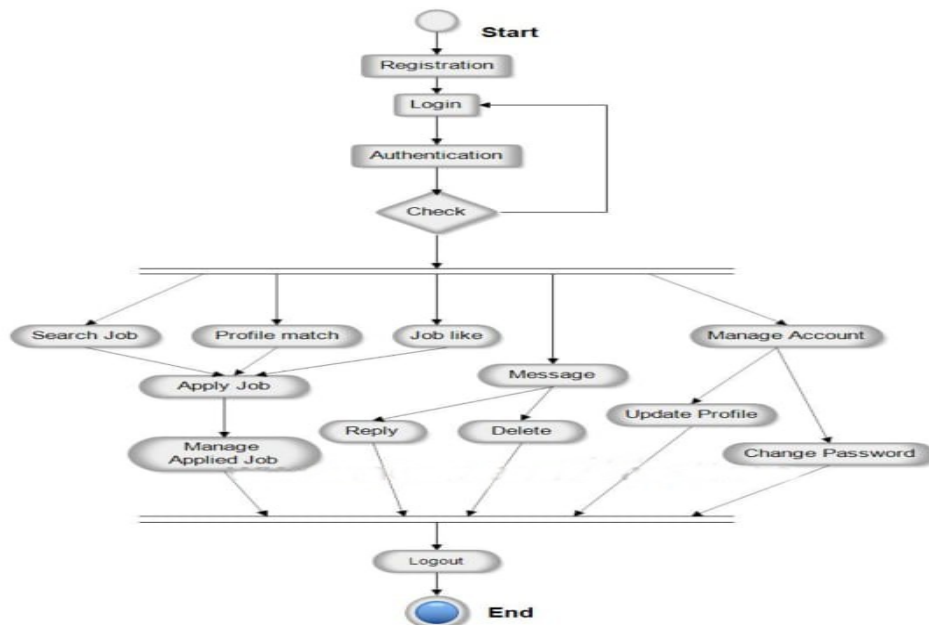
## HOD MODULE

The main responsibility of the HOD was to verify the details uploaded by student's in case of any false information related to student details he inform and suggest the student to change. And he/she share information related to companies. He can update the notifications and messages.

## STUDENT MODULE

Here in the student module first students want to register them self to enter into the portal. Student want to enter user name, password, e-mail, and want to select one security question to complete the registration form. After finishing the process of registration student can login in to the portal by using the user id and password. Student can register only one time to enter in to the portal. After completion of login process student can apply for the job and he/she want and to do that students need to upload the resume for the companies they liked or interested. Student can also check the drives happening in the campus by regular updating of notification.

## STUDENT MODULE ACTIVITY DIAGRAM



## IMPLEMENTATION

Quality implantation plays an important role in success of the project. The placement cell management system is an web application based project which helps colleges to deal with the placements. The four modules of placement cell management system as follows Admin module, HoD module, TPO module, and Student module.

- Fulfilment of this web application done by using Html and CSS for front end and Php as back end.
- Various tools required to implement this project.
- Visual studio 2013(Php tools installed)
- XAMPP (Apache server and MYSQL to store the data)
- Visual studio is used to edit the code and to test the PHP files we need to use Apache server to display php code output on browser ,and the source code store in XAMPP>htdocs>www folder.

### About modules:

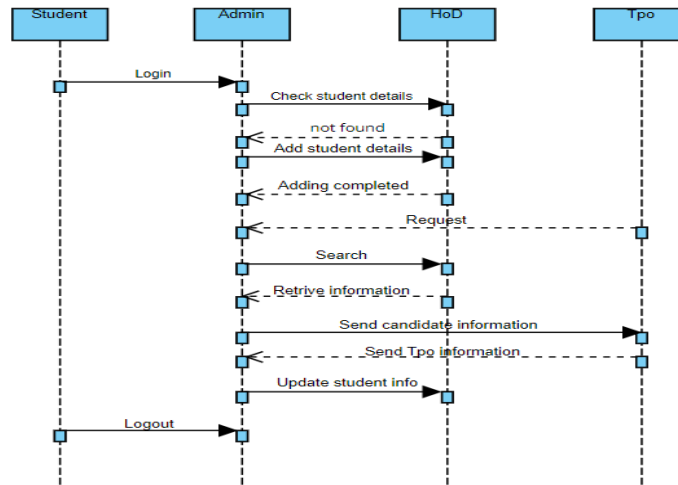
**Admin module:**Admin plays vital role in this project. In this module, the admin will login by using username and password. Once the admin was login into the web page it contains various modules which he/she need to maintain. Admin has complete control over the web page and he/she can use query tab to get all the information, which he needs, for campus drives. Admin can also send particulars regarded to changes in portal through notifications.

**TPO Module:**The TP officer was also called as training and placement officer. TP officer has the authority to update the drive details based on criteria of company. TP officer can also update the information and student placed details. TP officer send data related to the placement drives.

**HOD MODULE:**The main responsibility of the HOD was to verify the details of student and check the details of the students if any imprecise information recognized he suggest making changes in data updated by particular aggregate. Head of the departments can post notification to give any information about companies. He can update the notifications and messages.

**STUDENT MODULE:** Here in the student module first students want to register them self to enter into the portal. Student must fill the user name, password, e-mail, and need to select one security question to retrieve forgotten password then submit the registration form. After the completion of registration student can login in to the web portal by using the user id and password. Student can register only one time with unique id to enter in to

the portal. After completion of login process student select the preferences form to apply for the job and he/she wants and also needs to upload the resume for interested companies. Student can also check the drives happening in the campus.



#### SYSTEM REQUIREMENTS:

- **SOFTWARE REQUIREMENTS**

1. Windows 10 and Above
2. XAMPP Web Server

- **PROGRAMMING LANGUAGES**

1. HTML5
2. CSS3
3. Java script
4. PHP (Backend)
5. MySQL (Database)

- **SCRIPTING LANGUAGES:**

1. CSS
2. HTML

- **HARDWARE REQUIREMENT**

1. Hard Disk –120 GB or above
2. RAM – 2GB or above
3. Processor: Intel core i5 and frequency 2.0 GHz or above.

#### CONCLUSION

Increasing need of comfort and including all the data at one place has always been a challenging process for everybody. By implementing this portal we think we can make the lives of students and administration a little easier by proposing an alternative for the current system being used. This portal helps in management of various tasks related to the day-to-day activities of placements.