



Courier Management System

***Prof. Kshirsagar S.B.¹, Prof. Kshirsagar Sopan B.², Kale Prasad S.¹, Auti Saurabh S.²,
Gopale Pratik B.³, Gopale Tejas S.⁴***

^{1,2,3}Department Of Computer Engineering, Samarth Polytechnic Belhe, Tal- Junnar, Dist- Pune, Maharastra, India.

ABSTRACT

“It is now-a-days very important for the people to send or receive articles like imported furniture, electronic items, gifts, business goods and the like. People depend vastly on different transport systems which mostly use the manual way of receiving and delivering the articles. There is no way to track the articles till they are received and there is no way to let the customer know what happened in transit, once he booked some articles. In such a situation, we need a system which completely computerizes the cargo activities including time to time tracking of the articles sent. This need is fulfilled by Courier management system software which is online software for the cargo management people that enables them to receive the goods from a source and send them to a required destination and track their status from time to time.”

1. INTRODUCTION

DEFINITION

Courier Management System (CMS) is an integrated full business software framework for an enterprise which possesses procedures in domestic and international courier services. CMS performs a variety of activities pertaining to the processes in the logistic situation of a courier business. CMS solution handles the end to end process starting from initiating a courier order, driver pickup and delivery of a courier business. CMS covers all the controls and processes involved in International Courier Importation Services, International Courier Export Services, and Domestic Pickup & Delivery.

ABOUT PROJECT

It may help collecting perfect management in details. In very short time, the collection will be obvious, simple and sensible. It will help a person to know the management of passed year perfectly and vividly. It also helps in current all works relative to courier management system. It will also reduce the cost of collecting the management and collecting procedure will go on smoothly.

2. STATEMENT OF OBJECTIVES

The main objective of the system on “Courier Management System” is to manage the details of Courier, Customer, Delivery, Bill and Payment. It manages all the information about Courier, Email Notification, Payment, and Courier. The project is totally built administrative end and thus only the administrator is guaranteed the access. The purpose of the object is to build an application program to reduce the manual work for managing the Courier, Customer, Email Notification, and Delivery. It tracks all the details about the Delivery, Bill, and Payment

- Provides the searching facilities based on various factors. Such as Courier, Delivery, Bill and Payment.
- Courier management system also manages the email notification details online for bill details, payment details, Courier.
- It tracks all the information of customer, email notification, bill etc.
- Manage the information of customer.
- Shows the information and Description of courier and delivery.
- Manage the information of customer.
- Shows the information and description of the Courier and customer.
- Manage the information of Courier.

BASIC CONCEPTS

In the proposed “Courier Management System”, all the work is automated, and no wastage of time should be done. In proposed system, all the work is automated. If someone needs to send any courier than he or she can just login into the panel and send a request to the courier company and then the courier team can themselves contact you.

3.LITERATURES REVIEW**CONCEPT**

A literature survey in an exceedingly project report is that chapter that seem the assorted synthesise and analysis created within the field of your interest and also the results already revealed, taking under consideration the assorted parameters of the project and also the limit of the project. Literature survey helps to make your mind up our direction for analysis. Literature survey helps to line a goal for your analysis-hence it supplying you with your drawback statement. once you write a literature survey in respect of your project, you've got to put in writing the researches created by numerous analysts those square measure already revealed - & their methodology (which is largely their abstract) and also the conclusions they need fell upon.

SYSTEMATIC LITERATURE REVIEW

This chapter can in the main discuss on the study that square measure done by previous analysis of alternative authors in the similar space of the gift study. Throughout this chapter, there can be comprehensive discussion on theoretical and sensible views of previous studies done in on- line looking and offline looking for apparels. This study combines factors that alternative studies have done which will influence the consumer's getting call in on-line and offline stores for apparels. It includes the worth attractiveness, time saving, perceived risk, enjoyment and excitement, materiality and high interactivity. All of these factors can contribute to the study of customer's getting intention for apparels on each stores that includes on-line and offline looking. Pan, (2007) outlined getting intention as the avidity of getting the product. Similarly, Engel, Blackwell and Miniard, (1990) defines getting intention as a psychological method of decision-making. In on-line looking, it's expected that shoppers square measure a lot of probably to associate worth attractiveness and time saving with their intention to buy whereas in offline looking, customers square measure a lot of probably to associate materiality, high interactivity and enjoyment with their intention to search. As a result, on-line marketers or retailers ought to be aware of the issues two-faced by the customers and their perceived risk to increase their intention to search in on-line. Designers should take note of customers' desires as a result of the usability is the beginning purpose to get the confidence and support of the consumers (Alzola et. al., 2006).

4.METHODOLOGY ACCEPTANCE TESTING

Testing to verify a product meets client such as needs. A client typically will this sort of testing on a product that is developed outwardly.

BLACK BOX TESTING

Testing while not data of the internal workings of the item being tested. Tests ar typically purposeful purposeful testing supportive Associate in Nursing application or web site conforms to and properly performs all its needed functions. This entails a series of tests that perform a feature by feature validation of behaviour, victimisation a wide vary of traditional and incorrect input information. This will involve testing of the product's user interface, APIs, info management, security, installation, networking, etc. purposeful testing will be performed on Associate in Nursing machine-controlled or manual basis victimisation black box or white box methodologies.

REGRESSION TESTING

Similar in scope to a purposeful take a look at, a regression take a look at permits a consistent, repeatable validation of every new unharness of a product or web site. Such testing ensures rumored product defects have been corrected for every new unharness which no new quality issues were introduced in the maintenance method. although regression take a look ating will be performed manually Associate in Nursing machine- controlled test suite is typically used to scale back the time and resources required to perform the needed testing.

SYSTEM TESTING

Testing conducted on a complete, integrated system to judge the system's compliance with its such as needs. System testing falls inside the scope of black box testing, and as such, ought to need no data of the inner style of the code or logic. .

UNIT TESTING

Functional Associate in Nursing reliability testing in an Engineering setting. manufacturing tests for the behaviour of elements of a product to make sure their correct behaviour previous to system integration .

WHITE BOX TESTING

Testing based mostly on Associate in Nursing analysis of internal workings and structure of a bit of software system. Includes techniques like Branch Testing and Path Testing. Also famed as Structural Testing and Glass Box Testing

5. SAMPLE IMAGE

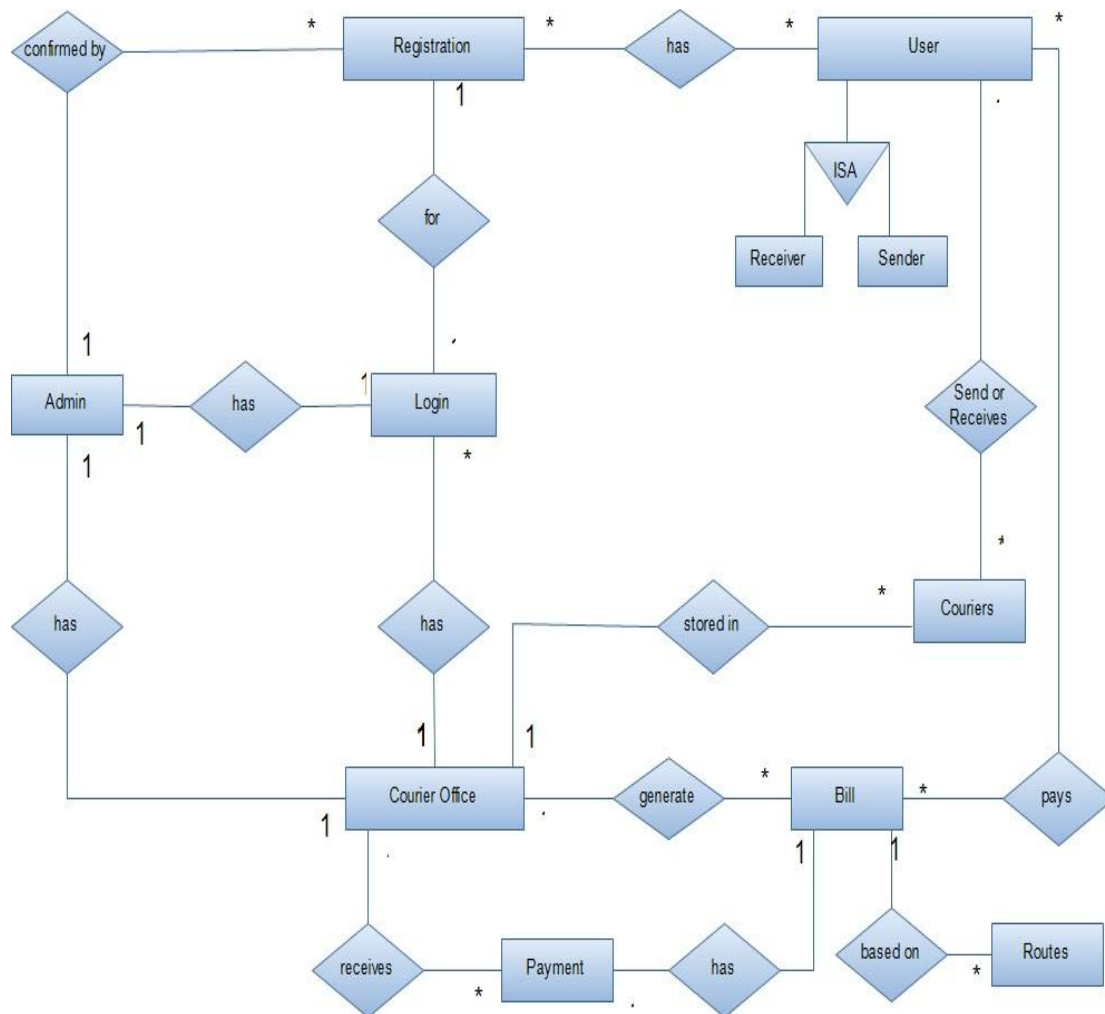


Fig. – E – R DIAGRAM

6. CONCLUSION

The project titled 'Courier Management Service' was developed to the courier services and direction and with their help. The system was tested and the performance of the system was found to be acceptable. All the necessary output was created.

The system was found to be user-friendly with help message for the customer. The menu Driven Architecture of the system provide an easy to use environment for the users.

The system was implemented successfully. The manpower and working hours needed to operate the system was less and it was seen to be more secure. Thus, the Project was completed successfully.

REFERENCES AND BIBLIOGRAPHY:

- [1] Google for problem solving
- [2] <http://www.javaworld.com/javaworld/jw-01-1998/jw-01-Credentialreview.html>
- [3] Head First Java 2nd Edition
- [4] <http://www.jdbc-tutorial.com/>
- [5] Java and Software Design Concepts by Apress

-
- [6] <https://www.tutorialspoint.com/java/>
 - [7] <http://www.javatpoint.com/java-tutorial>
 - [8] <http://www.wampserver.com/en/>
 - [9] <http://www.JSP.net/>
 - [10] <http://www.tutorialspoint.com/mysql/>