



Bus Pass Management System

Prof. Gunjal. T.S.¹, Prof. Kshirsagar. S.B.², Narad Ajinkya S.¹, Durgude Sanket S.², Gadekar Rohit P.³, Pansare Pranit P.⁴

^{1,2,3}Department Of Computer Engineering, Samarth Polytechnic Belhe, Tal-Junnar, Dist-Pune, Maharashtra, India.

ABSTRACT

Bus Pass Management System" is a web application that will manage the records of pass which is issue by bus administrative. „Bus Pass Management System is an automatic system which delivers data processing in very high speed in systematic manner. This system helps bus administrative to keep records of bus passes. Before this application the manual process is used to do the process of issuing the bus pass to the traveller. This manual process requires man power and more time consuming to avoid this difficulties we implement „Bus Pass Management System.

INTRODUCTION

Bus Pass Management system is a web-based technology that will manage the records of pass which is issue by administrative and also help to provide online bus pass to people who need to travel daily. Bus Pass Management System is helpful to bus administrative by reducing the paper work, time consumption and makes a process of getting bus pass as a simple and fast. The Software powered by PHP assures clear and efficient services to the agency. This easy-to-operate system helps to access and modify user details, provides efficient printing facility. The software is designed to provide Reliable and error free information. The database is driven by My SQL thus providing portability.

PROJECT OVERVIEW

Bus Pass Management system could be a internet application technology which will manage the records of pass that is issue by body and additionally facilitate to produce on-line bus pass to those that have to be compelled to travel daily. Bus Pass Management System is useful to bus body by reducing the most paper work, time saving and makes a method of obtaining bus pass as an easy and quick. Bus Pass Management system we tend to use PHP and MySQL info. this project that keeps records of pass that is issue by body. Bus Pass Management system 2 module that's. admin and user. Dashboard: during this sections, admin will Directly read the overall range of any class and the way several pass are created in sooner or later, yesterdays and last seven's days

Category: therein section, admin will manage class (add/update).

Passes: therein section, admin will amendment pass(add/update/take print pass).

Pages: therein section, admin will update regarding USA and get in touch with USA pages. Enquiry: during this section, admin scan the enquiries that square measure send by users.

Reports: therein section admin will produce pass reports between 2 dates. Search: during this section, admin will search a any locomote pass range.

Admin also can update his profile, amendment the word and forgot word. User

1. Home Page: User will visit home page.

2. read Pass: User will read his/her pass and take print with the assistance of its Pass range.

3. regarding Us: User show the small print of .website administrator.

4. Contact Us: User contact with web site administrator.

PROPOSED SYSTEM

- 1.Planned approach towards working
- 2.Accuracy.
3. Immediately storage of information.
- 4.Easy to operate.
- 5.Pass Generation

METHODOLOGYACCEPTANCETESTING

METHODOLGY:-

Step 1 - Search bus pass management system.com on any browser.

Step 2 - If you got userID and password then do login.

Step 3 – you can create your pass

Step 4 – User can read user manual if they have any doubt about passes.

Step 5 – user can change passes information

Step 6 – you can search your pass from your pass no

Step 7 – Then you will show your pass.

Step 8 - Logout your account.

TESTING :-

Testing to verify a product meets client such as needs. A client typically will this sort of testing on a product that is developed outwardly.

BLACK BOX TESTING

Testing while not data of the internal workings of the item being tested. Tests ar typically purposeful purposeful testing supportive Associate in Nursing application or web site conforms to and properly performs all its needed functions. This entails a series of tests that perform a feature by feature validation of behaviour, victimisation a wide vary of traditional and incorrect input information. This will involve testing of the product’s user interface, APIs, info management, security, installation, networking, etc. purposeful testing will be performe d on Associate in Nursing machine-controlled or manual basis victimisation black box or white box methodologies.

REGRESSION TESTING

Similar in scope to a purposeful take a look at, a regression take a look at permits a consistent, repeatable validation of every new unharness of a product or web site. Such testing ensures rumored product defects have been corrected for every new unharness which no new quality issues were introduced in the maintenance method. although regression take a look ating will be performed manually Associate in Nursing machine- controlled test suite is typically used to scale back the time and resources required to perform the needed testing.

SYSTEM TESTING

Testing conducted on a complete, integrated system to judge the system’s compliance with its such as needs. System testing falls inside the scope of black box testing, and as such, ought to need no data of the inner style of the code or logic. .

UNIT TESTING

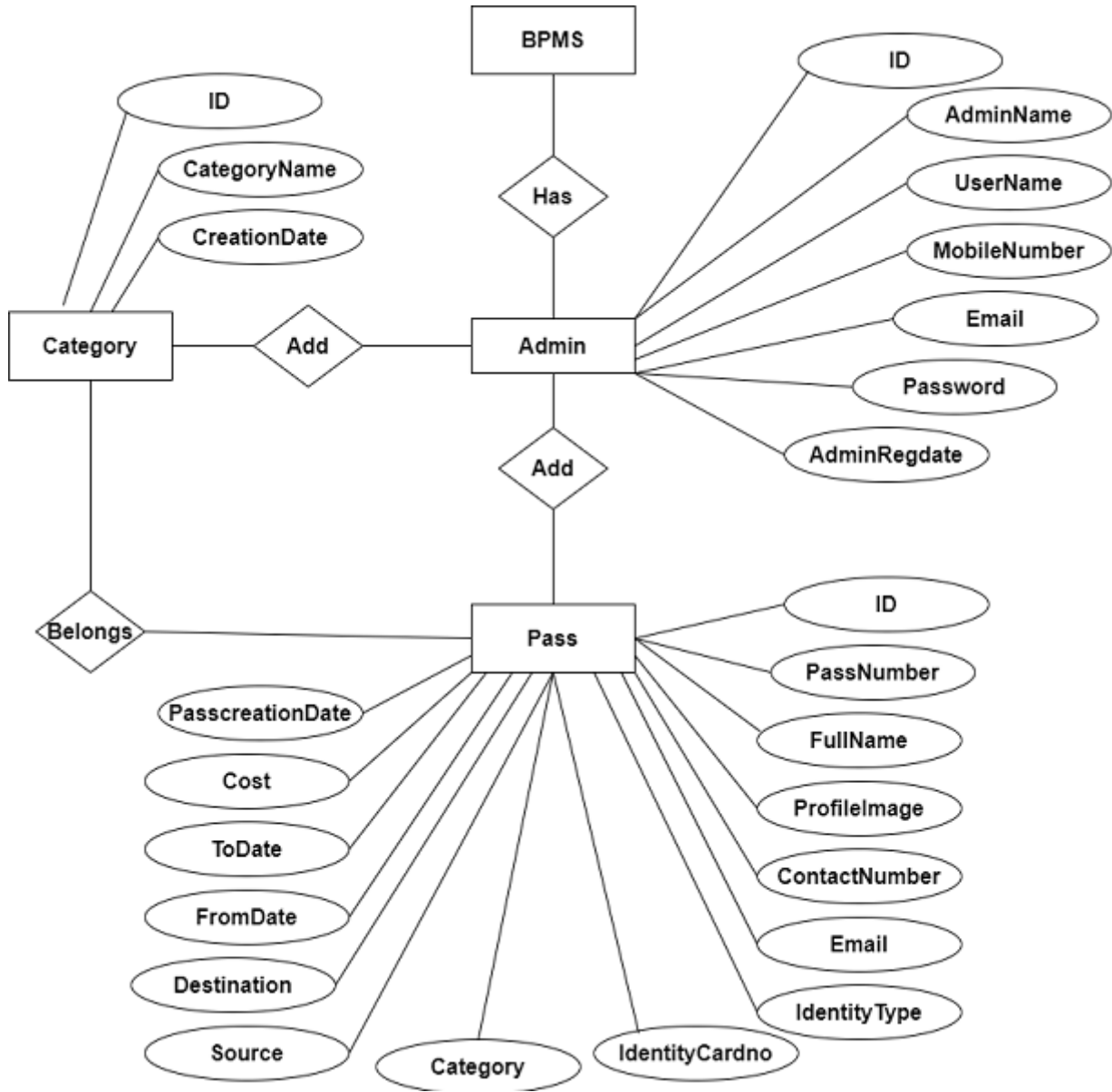
Functional Associate in Nursinggd reliableness testing in an Engineering setting. manufacturing tests for the behaviour of elements of a product to make sure their correct behaviour previous to system integration .

WHITE BOX TESTING

Testing based mostly on Associate in Nursing analysis of internal workings and structure of a bit of software system. Includes techniques like Branch Testing and Path Testing. Also famed as Structural Testing and Glass Box Testing

SAMPLEIMAGE

Fig.-E-RDIAGRAM



CONCLUSION

Bus Pass Management System' have powerful features and is certainly more than a "very simple" diagramming tool. With its support of MDA (Model Driven Architecture), it is the more aimed at people using UML in an intensive way and with some code generations objectives than for simply drawing diagrams to document requirements. However, using this project just as a diagramming tool work fine, especially on the Windows OS as the tool is built with Delphi and might compile faster than the Java-based tools. Modern world is computer world where the things have to be fix promptly that requires optimal resources and optimal methods. Due to this inevitable requirement, computerisation of every sector in the main stream is the must, so that it can be hold itself in the race. Few eye catching features of our project are by its simplicity, accuracy, and its user friendly interface. Our software incorporates all features and facilities provided by the sublime text editor software. This project has been developed for manage the entire working of the bus pass administrative. Our software simplifies and replaces all the manual effort and the too much paper works done by the administrative to a completely electronically environment. Hence both user and admin are at their ease. The user is serviced at his footsteps wherein he just types in the request and he is just a click away. We would like to convey our sincere gratitude and thanks to all, who stood as our backbone behind, in designing, formatting and helping us in executing this project successfully

REFERENCES AND BIBLIOGRAPHY:

- Google for problem solving
- <http://www.javaworld.com/javaworld/jw-01-1998/jw-01-Credentialreview.html>
- Head First Java 2nd Edition
- <http://www.jdbc-tutorial.com/>
- Java and Software Design Concepts by Apress
- <https://www.tutorialspoint.com/java/>
- <http://www.javatpoint.com/java-tutorial>
- <https://docs.oracle.com/javase/tutorial/>
- <http://www.wampserver.com/en/>
- <http://www.JSP.net/>
- <http://www.tutorialspoint.com/mysql/>
- <http://httpd.apache.org/docs/2.0/misc/tutorials.html>