



---

## ATTENDANCE PORTAL

*Sharwari Sontakke<sup>1</sup>, Mithila Radye<sup>1</sup>, Sanket Sawant<sup>1</sup>, Prof. Manjiri Pathak<sup>2</sup>*

<sup>1</sup>Sharwari Sontakke [vu1f1819028@pvppcoe.ac.in](mailto:vu1f1819028@pvppcoe.ac.in)

<sup>1</sup>Mithila Radye [vu1f1819030@pvppcoe.ac.in](mailto:vu1f1819030@pvppcoe.ac.in)

<sup>1</sup>Sanket Sawant [vu1f1819062@pvppcoe.ac.in](mailto:vu1f1819062@pvppcoe.ac.in)

<sup>2</sup>Prof. Manjiri Pathak, [mpathak@pvppcoe.ac.in](mailto:mpathak@pvppcoe.ac.in),

<sup>1,2</sup>VPPCOE&VA

---

### ABSTRACT

Attendance Management is critical to the success of any organisation, including educational institutions, government agencies, and the commercial sector. To enhance their effectiveness, organisations will need to keep track of internal personnel such as workers. Keeping track of staff attendance amid the Covid-19 issue has proven to be tough. Manual calculating creates errors and wastes a lot of time, therefore the capacity to compute the attendance % becomes a huge problem. For this reason, an effective Android application for attendance monitoring has been developed to track staff activities and attendance on a daily basis. This programme records attendance as time and place, as well as an image, in a database.

---

*Keywords: Automated Attendance Location Detection.*

---

## 1. INTRODUCTION

The software employees Because of the Covid-19 dilemma in today's globe Employees are unable to visit their places of work. This is the point at which The purpose of the Attendance Portal is to assist both the company and the employees. Employees can add them to the Attendance Portal.

Regular attendance this is beneficial to both the business and the individual.

Employee for both work-from-home and non-work-from-home jobs

The project's scope is the system on which the programme is installed, i.e., the project is an android app that will operate for a certain institute. However, in order for it to work, it requires an internet connection.

A task function, i.e. adding daily work processes, is also available through the Attendance Portal.

In the future changes/updates, there will be a monthly employee report.

I'm focusing on increasing staff attendance by their end in this project.

### AIM & OBJECTIVES

The main goal of the Attendance Portal App is to keep track of employees' everyday attendance in the workplace.

Each employee will have their own login information, which they will use to access the application.

An employee's attendance can be entered and their company profile can be viewed. Employees can enter their daily finished or pending work through the Attendance Portal. This allows you to see what a particular employee was working on at any given time.

The attendance of a specific employee is being tracked. Reduce the amount of labour that is done by hand.

## 2. REQUIREMENT ANALYSIS

[Domain Explanation]

The term "requirements" refers to something that is needed or desired. The different components and software that were used to construct this project are the needs of our project.

The following components are used to construct the project:

### Android Studio:

Android Studio is Google's official integrated development environment, based on JetBrains , IntelliJ IDEA software and intended exclusively for Android programming. Android Studio enables developers to quickly incorporate changes by pushing code and allowing for rapid modifications without having to restart the app. This gives you a lot of freedom when it comes to making modest adjustments to your program while it's still running. Emulators (Virtual Android Devices) are also available in Android Studio, which may be used to test apps on several devices in the development computer at the same time.

[Scope]

This technology is progressively becoming a universal biometric solution when compared to other biometric solutions. It's precise and enables for a high enrollment and validation rate. This type of attendance system isn't limited to educational establishments. It can also be applied to a variety of different fields. A similar system for keeping track of faculty absences can be put in place. The system should be available to all employees in companies and institutions.

### Class Diagram:

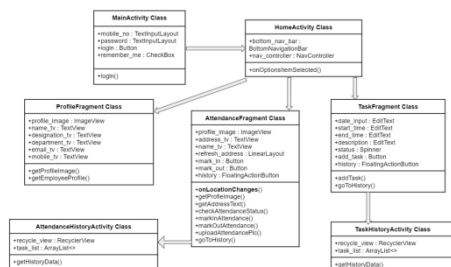
Class diagrams express, in a general way, the static structure of a system, in Class terms of classes and relationships between those classes. Just as a class describes a set of objects, an association describes a set of links; objects are class instances and links are association instances. It consists of various components which are as follows:

Class

Attribute

Operation

Association



## 3. EXISTING SYSTEM

Employee attendance was tracked using hardcopy documents and a manual approach. In addition to squandering time and exerting effort in the preparation of sheets and documents some issues with the performance and stability of the systems that have been developed. Included in the current systems are:

#### 4. PROPOSED SYSTEM

We can get rich and intelligible staff attendance management by using an automated solution. This information can also aid in the production of reports.

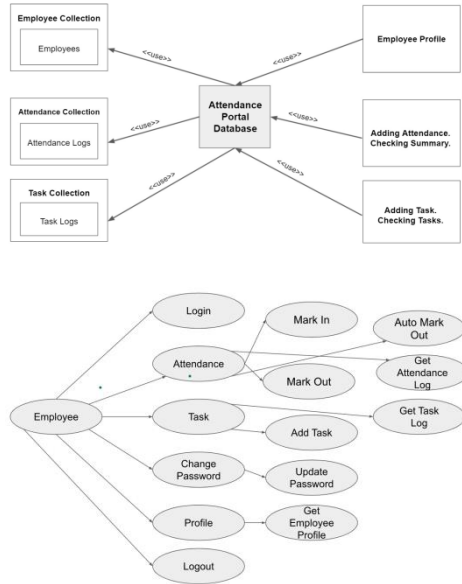


Figure 1: Use Case Diagram

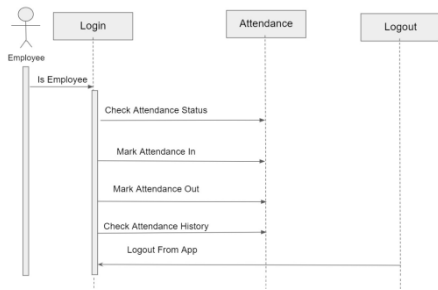


Figure 2: Activity Diagram

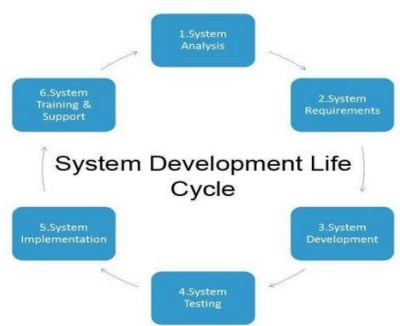


Figure 3: SDLC

---

## 5. CONCLUSION

Time attendance software may offer value to an organisation by assisting firms in identifying possible issues ahead of time. Using attendance software not only educates workers about what is expected of them in writing, but it also allows them to self-evaluate their dedication to the company. The expense of the attendance systems is recouped. Businesses save time, money, and effort in the long term.

---

## 6. REFERENCES

- [1] Gangagowri G, Muthuselvi J, and Sujitha S are the authors of Gangagowri G, Muthuselvi J, and Sujitha S. System for Tracking Attendance
- [2] Anitha V Pai, A. Krishna, P.M. Kshama, and M. Correa The student attendance management system uses a web service. [www.ijarse.com](http://www.ijarse.com). 5 March 2016 (3).
- [3] 5 March 2016 (3). 7. Arbain N, Nordin NF, Isa NM, Saaidin S, Arbain N, Nordin NF, Isa NM, Saaidin S, Arbain N, Nordin NF LAS: RFID-ARDUINO technology-integrated web-based laboratory attendance system. pp. 89–94 in IEEE; 2014.
- [4] pp. 89–94 in IEEE; 2014. 8. Srinidhi M, Roy R. Using biometric and radio frequency 9. Olaniyi O, Arulogun O, Olatunbosun A, Fakolujo O, Attendance control system for students using RFID. *International Journal of Science and Engineering Research*, vol. 4, no. 2, pp. 1–9.
- [5] Kassim M, Mazlan H, Zaini N, Salleh MK, Kassim M, Mazlan H, Mazlan H, Mazlan H, Mazlan H, Mazlan H, Mazlan H An RFID-enabled web-based student attendance system. pp. 213–218 in IEEE; 2012.